

DRAFT
08-02-19

New Faculty Orientation

August 2019



NEW FACULTY ORIENTATION AGENDA

Monday, August 19th – 208 TURNBULL CONFERENCE CENTER

8:00 a.m. Registration and Breakfast



9:00 a.m. Welcome

Janet Kistner
*Vice President for Faculty
Development and Advancement*



9:05 a.m. President's Welcome

John E. Thrasher
University President



9:25 a.m. Provost's Welcome
Expectations for Promotion and
Tenure, and Specialized Faculty Promotions

Sally E. McRorie
*Provost and Executive Vice
President for Academic Affairs*



9:45 a.m. Office of Research

Laurel Fulkerson
Associate Vice President for Research



10:00 a.m. Student Affairs

Amy Hecht
Vice President for Student Affairs

10:15 a.m. BREAK



10:30 a.m. Finance and Administration

Kyle Clark
*Vice President for Finance and
Administration*



10:45 a.m. Equal Opportunity and Diversity

Renisha Gibbs
*Associate Vice President, Human Resources and
Chief of Staff, Finance and Administration*



11:00 a.m. Title IX Issues

Mandy Hambleton
Title IX Director



11:10 a.m. Campus Safety and Responding
to Student Issues

Chief David Perry
Chief of Police

and



Vicki Dobiyaniski
Dean of Students

NEW FACULTY ORIENTATION AGENDA

Monday, August 19th – 208 TURNBULL CONFERENCE CENTER (continued)



11:30 a.m. The Graduate School

Mark Riley
Dean, The Graduate School



11:45 a.m. Community Welcome



Lester Hutt
Tallahassee Welcomes U
Representative Loranne Ausley
Florida House of Representatives, District 9
Elizabeth Emmanuel
CEO, Tallahassee Downtown Improvement Authority



11:55 a.m. *Opening Nights* Giveaway

Michael Blachly
Director, *Opening Nights* at FSU

12:00 p.m. LUNCHEON

Breakout Sessions: **Group A**, Room 103; **Group B**, Room 214; **Group C**, Room 205
>>> these correlate to your name tag dot color <<<

- 1:00 Session #1
- 1:45 **BREAK**
- 2:00 Session #2
- 2:45 **BREAK**
- 3:00 Session #3
- 3:45 **BREAK**

Group A – Tenure-Track Faculty, Room 103

- Session 1: 1:00 - 1:45pm Faculty Development – Peggy Wright-Cleveland
- Session 2: 2:00 - 2:45pm Office of Research – Beth Hodges
- Session 3: 3:00 - 3:45pm Promotion and Tenure – Janet Kistner

Group B – Teaching Specialized Faculty, Room 214 (includes Instructional Specialists and Adjuncts)

- Session 1: 1:00 - 1:45pm Promotion – Janet Kistner
- Session 2: 2:00 - 2:45pm Faculty Development – Peggy Wright-Cleveland
- Session 3: 3:00 - 3:45pm Academic Integrity – Jennifer Buchanan and Ann DelRossi

Group C – Research and Research Support Specialized Faculty, Room 205

- Session 1: 1:00 - 1:45pm Office of Research – Beth Hodges
- Session 2: 2:00 - 2:45pm Promotion and Tenure – Janet Kistner
- Session 3: 3:00 - 3:45pm Faculty Development – Peggy Wright-Cleveland

Librarians and others with no dot may participate in any of the breakout sessions above, or leave for the day.

*(Please return to room 208 for the presentation on Insurance, Benefits, and Retirement.
Those who have already signed up are welcome to leave for the day.)*

NEW FACULTY ORIENTATION AGENDA

Monday, August 19th – 208 TURNBULL CONFERENCE CENTER (continued)



4:00 p.m. HR—Insurance and Benefits (*optional*)

Kathy Worthman



HR—Retirement (*optional*)

Jennifer Stamper

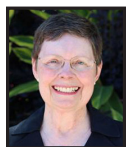
5:30 – 7:30 p.m. **Community Welcome Reception**

Capitol Complex

Hosted by the Tallahassee Chamber of Commerce

Tuesday, August 20th – 208 TURNBULL CONFERENCE CENTER

8:00 a.m. Registration and Breakfast



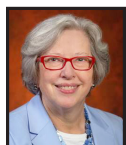
9:00 a.m. Welcome from the Faculty Senate

Kris Harper
*Faculty Senate President
Professor, Department of History*



9:10 a.m. United Faculty of Florida

Matthew Lata
*President, UFF-FSU Chapter
Professor, College of Music*



9:20 a.m. University Libraries

Gale Etschmaier
Dean, University Libraries



9:35 a.m. International Programs

James Pitts
Director, International Programs



9:50 a.m. General Academics

Jennifer Buchanan
*Associate Vice President for Faculty
Development and Advancement*

10:10 a.m. BREAK



10:30 a.m. Project Resilience

Karen Oehme
Director, Institute for Family Violence Studies

NEW FACULTY ORIENTATION AGENDA

Tuesday, August 20th – 208 TURNBULL CONFERENCE CENTER (continued)



10:45 a.m. Designing Learning for Our Students –
Student Success

Karen Laughlin
Dean, Undergraduate Studies



Leslie Richardson
Director, Center for the Advancement of Teaching



Joe O'Shea
Assistant Provost

Student Panel

11:45 a.m. LUNCHEON



12:45 p.m. FEAS Workshop

Tiffany Phillips
*IT Support Specialist, Office
of Faculty Development and Advancement*

2:00 p.m. BREAK



2:15 p.m. CANVAS Workshop

John Braswell
CANVAS User Support Administrator

3:30 p.m. Program Ends for the Day

Wednesday, August 21st – PRESIDENT'S HOUSE

5:00–7:00 p.m. President's New Faculty Social

FSU Alumni Center
Hosted by President John and Mrs. Jean Thrasher

Saturday, August 24th – TURNBULL CONFERENCE CENTER

5:30–8:00 p.m. Provost's New Faculty Dinner

Hosted by Provost Sally E. McRorie

SPEAKER DIRECTORY (ALPHABETICAL)

JOHN BRASWELL jbraswell@campus.fsu.edu — 3500 University Center Bldg. C — MC: 2550 — 645-0469	<i>campus.fsu.edu</i>	CANVAS User Support Administrator
JENNIFER BUCHANAN jbuchanan@admin.fsu.edu — 115 Westcott Bldg. — MC: 1480 — 644-6876	<i>fda.fsu.edu</i>	Associate Vice President for Faculty Development and Advancement
KYLE CLARK kyle.clark@fsu.edu — 214 Westcott Bldg. — MC: 1320 — 644-4444	<i>vpfa.fsu.edu</i>	Vice President for Finance and Administration
VICKI DOBIYANSKI vdobiyanski@admin.fsu.edu — 4301 University Center Bldg. A — MC: 2440 — 644-2428	<i>dos.fsu.edu</i>	Dean of Students
GALE ETSCHMAIER getschmaier@fsu.edu — 314G Strozier Library Bldg. — MC: 2047 — 644-5211	<i>lib.fsu.edu</i>	Dean, University Libraries
LAUREL FULKERSON lfulkerson@fsu.edu — 3021 Westcott Bldg. — MC: 1330 — 644-0806	<i>research.fsu.edu</i>	Associate Vice President for Research
RENISHA GIBBS rgibbs@admin.fsu.edu — 6200 University Center Bldg. A — MC: 2410 — 644-8082	<i>hr.fsu.edu</i>	Associate Vice President, Human Resources; Chief of Staff, Finance and Administration
MANDY HAMBLETON mhambleton@fsu.edu — 408H Westcott Bldg. — MC: 1310 — 644-6271	<i>knowmore.fsu.edu/title-ix</i>	Director, Title IX
KRIS HARPER kcharper@fsu.edu — 401 Bellamy Bldg. — MC: 2200 — 644-5888	<i>facsenate.fsu.edu</i>	Faculty Senate President Professor, Department of History
AMY HECHT ahecht@fsu.edu — 313 Westcott Bldg. — MC: 1340 — 644-5590	<i>studentaffairs.fsu.edu</i>	Vice President for Student Affairs
JANET KISTNER jkistner@fsu.edu — 211 Westcott Bldg. — MC: 1480 — 644-5196	<i>fda.fsu.edu</i>	Vice President for Faculty Development and Advancement
MATTHEW LATA mlata@admin.fsu.edu — 202N Housewright Music Bldg. — MC: 1180 — 644-0408	<i>uff.fsu.org</i>	UFF-FSU Chapter; Professor, College of Music
KAREN LAUGHLIN klaughlin@admin.fsu.edu — 3300 University Center Bldg. A — MC: 2460 — 644-6412	<i>undergrad.fsu.edu</i>	Dean of Undergraduate Studies
SALLY MCRORIE smcrorie@fsu.edu — 212K Westcott Bldg. — MC: 1310 — 644-1259	<i>provost.fsu.edu</i>	Provost and Executive Vice President for Academic Affairs
KAREN OEHME koehme@fsu.edu — 2501C Medical Sciences Bldg. — MC: 4300 — 644-6303	<i>familyvio.csw.fsu.edu</i>	Director, Institute for Family Violence Studies
JOE O'SHEA joshea@fsu.edu — 212F Westcott Bldg. — MC: 1310 — 645-8118	<i>provost.fsu.edu</i>	Assistant Provost and Assistant Vice President for Academic Affairs
CHIEF DAVID PERRY dlperry@fsu.edu — 108 Tanner Hall—Public Safety Bldg. — MC: 4215 — 644-1240	<i>police.fsu.edu</i>	Chief of Police
TIFFANY PHILLIPS tphillips@fsu.edu — 115 Westcott Bldg. — MC: 1480 — 645-8203	<i>fda.fsu.edu</i>	IT Support Specialist, Faculty Development and Advancement
JAMES PITTS jpitts@admin.fsu.edu — 5500 University Center Bldg. A — MC: 2420 — 644-0538	<i>international.fsu.edu</i>	Director, International Programs
LESLIE RICHARDSON larichardson@fsu.edu — 432B Diffenbaugh Bldg. — MC: 1310 — 645-2306	<i>provost.fsu.edu</i>	Founding Director, Center for the Advancement of Teaching
MARK RILEY mriley@admin.fsu.edu — 314 Westcott Bldg. — MC: 1410 — 644-3501	<i>gradschool.fsu.edu</i>	Dean of The Graduate School
JOHN THRASHER jthrasher@fsu.edu — 211 Westcott Bldg. — MC: 1470 — 644-1085	<i>president.fsu.edu</i>	University President

NEW FACULTY DIRECTORY 2019-2020

COLLEGE OF APPLIED STUDIES — PANAMA CITY, FL CAMPUS



JOSEPH KRUPKA

TEACHING FACULTY I

Department of Accounting

Degree Institution: Georgia State University, Ph.D.

Research Interests: Accounting ethics and tax efficient financial planning along with sustainability and corporate social responsibility.



KAREN WORKS

TEACHING FACULTY I

Department of Computer Science

Degree Institution: Worcester Polytechnic Institute, Ph.D.

Research Interests: Methods to ensure that streaming database systems process the data required to ensure that the most critical results are produced when resources are scarce.



TRACEE WATKINS

TEACHING FACULTY I

Department of Hospitality

Degree Institution: Kansas State University, Ph.D.

Research Interests: Emotion analytics and safety behavior change, and also applied food safety operations management.



YVONNE TRAYNHAM

TEACHING FACULTY I

Department of Mechanical Engineering

Degree Institution: University of New Orleans, Ph.D.

Teaching Interests: Engineering science courses (Materials Engineering, Strength of Materials, Labs) as well as applied mechanical engineering courses (Machine Design, Vibrations, Design Capstone).



LAURIE LAWRENCE

VISITING TEACHING FACULTY I

Department of Professional Communication

Degree Institution: Indiana University of Pennsylvania, Ph.D.

Research Interests: Human trafficking with focus on education, awareness, and training.

Additional interests include social capital and persuasion.



ROBERT CVORYNEK

VISITING TEACHING FACULTY I

Department of Social Science and Education

Degree Institution: Columbia University, Ph.D.

Research Interests: Social and cultural history focusing on sport, especially baseball, and the intersection of sport and race in modern America.

NEW FACULTY DIRECTORY 2019-2020

COLLEGE OF ARTS AND SCIENCES



THOMAS LEPPARD

ASSISTANT PROFESSOR

Department of Anthropology

Degree Institution: Brown University, Ph.D.

Research Interests: The transition from small-scale and non-hierarchical to complex, hierarchical human communities, comparative approaches to emergent social complexity, variability in forms of Holocene social organization, and how environmental adaptation drove this variability. More specifically, the emergence of complex societies in marginal or challenging environments, particularly islands, which might be expected to discourage such emergence, along with hominin dispersal, geospatial analysis, and survey archaeology.



MICHAEL CORTEZ

ASSISTANT PROFESSOR

Department of Biological Science

Degree Institution: Cornell University, Ph.D.

Research Interests: Development and analysis mathematical models of populations, and a focus on ecology, evolution, and disease dynamics.



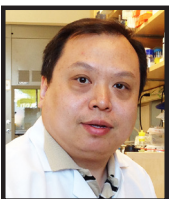
DOUGLAS STORAGE

ASSISTANT PROFESSOR

Department of Biological Science

Degree Institution: University of Connecticut, Ph.D.

Research Interests: Investigating the mechanisms employed by the brain to encode sensory information and ultimately transform those signals into perception and experiences that drive behavior.



YUAN TIAN

ASSISTANT IN RESEARCH

Department of Biological Science

Degree Institution: Weill Cornell Medical College, Ph.D.

Research Interests: Elucidating the molecular mechanisms governing host-pathogen interactions via biophysical and biochemical approaches.



ROBERTO VINCIS

ASSISTANT PROFESSOR

Department of Biological Science

Degree Institution: University of Geneva, Switzerland, Ph.D.

Research Interests: The neural substrates that process and integrate taste and reward information, and guide consummatory behaviors and dietary choices. Special focus is on gustatory portion of the insular cortex and thalamic regions, the former a brain region that processes sensory, affective, and cognitive dimensions associated with the experience of eating. The experimental approach combines anatomical methods, electrophysiology, optical imaging (fiber photometry and micro-endoscopy in behaving rodents), behavioral training, and computational methods.

NEW FACULTY DIRECTORY 2019-2020

COLLEGE OF ARTS AND SCIENCES



ARTHUR WHITTINGTON

ASSISTANT IN RESEARCH

Department of Biological Science

Degree Institution: Florida State University, Ph.D.

Research Interests: Protein structure, function, dynamics, evolution, and molecular separations.



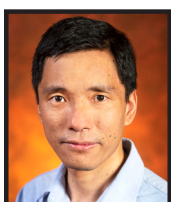
ROBERT LAZENBY

ASSISTANT PROFESSOR

Department of Chemistry and Biochemistry

Degree Institution: University of Warwick, England, Ph.D.

Research Interests: Development of electrochemical micro- and nanoscale biosensor probes for analytical applications, including scanned probe microscopy for high-resolution imaging of local molecule concentrations with high specificity.



XINSONG LIN

ASSOCIATE IN RESEARCH

Department of Chemistry and Biochemistry

Degree Institution: Chinese Academy of Sciences, Ph.D.

Research Interests: Developing new methodologies to advance the capabilities of x-ray characterization techniques for inorganic and organometallic compounds.



ROBERT SCHURKO

PROFESSOR

Department of Chemistry and Biochemistry

Degree Institution: Dalhousie University, Ph.D.

Research Interests: The area of solid-state nuclear magnetic resonance spectroscopy, applying solid-state NMR to elements across the periodic table, studying materials like catalysts, nanoparticles, and pharmaceuticals.



GRIGORY FEDYUKOVICH

ASSISTANT PROFESSOR

Department of Computer Science

Degree Institution: Universita della Svizzera Italiana, Ph.D.

Research Interests: Program verification and synthesis, relational verification, and its applications to analyzing program security.



ANN FORD TYSON

TEACHING FACULTY III

Department of Computer Science

Degree Institution: University of Michigan–Ann Arbor, M.S.

Teaching Interests: Computer programming, basic hardware concepts, computer literacy and ethics.

NEW FACULTY DIRECTORY 2019-2020

COLLEGE OF ARTS AND SCIENCES



ALAN KUHNLE

ASSISTANT PROFESSOR

Department of Computer Science

Degree Institution: University of Florida, Ph.D.

Research Interests: Collection of massive amounts of data requires algorithms and techniques capable of analyzing this data; therefore, designing scalable algorithms to approximate optimization problems to interpret large data sets.



CHRIS MILLS

TEACHING FACULTY I

Department of Computer Science

Degree Institution: Florida State University, Ph.D.

Research Interests: Software engineering, natural language interfaces for computing, and the application of machine learning and data science to various business domains.



CARLA DELLA GATTA

ASSISTANT PROFESSOR

Department of English

Degree Institution: Northwestern University, Ph.D.

Research Interests: Early modern theatre, critical race and ethnicity studies, and gender and sexuality studies. Also, the investigation of Latinx-themed Shakespeare productions and the dramaturgies of performing ethnicity onstage.



ELÍAS DOMÍNGUEZ BARAJAS

ASSOCIATE PROFESSOR

Department of English

Degree Institution: University of Illinois–Chicago, Ph.D.

Research Interests: Literacy and discursive practices across ethnic and linguistic communities, and is devoted to the study of the social functions of verbal art.



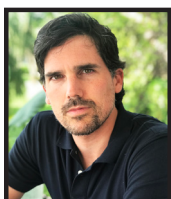
JOHN GARCIA

ASSISTANT PROFESSOR

Department of English

Degree Institution: University of California–Berkeley, Ph.D.

Research Interests: The history, culture, and economics of publishing in early America, from the 17th through the 19th centuries, incorporating copious amounts of archival research including interdisciplinary frameworks from anthropology, media studies, critical theory, bibliography, and literary studies.



PABLO MAURETTE

ASSISTANT PROFESSOR

Department of English

Degree Institution: University of North Carolina–Chapel Hill, Ph.D.

Research Interests: Early Modern notions of monstrosity in literature, visual arts, and the natural sciences across Europe and the New World, along with the intersections between visual arts and rhetoric, centering on the concept of evidence.

NEW FACULTY DIRECTORY 2019-2020

COLLEGE OF ARTS AND SCIENCES



ALYSSA ATWOOD

ASSISTANT PROFESSOR

Department of Earth, Ocean and Atmospheric Science

Degree Institution: University of Washington, Ph.D.

Research Interests: Developing paleoclimate reconstructions from the tropics based on the geochemistry of fossil coral and lake sediments, combining these records with numerical models and dynamical theory to investigate past and future climate variability and change.



WENYUAN FAN

ASSISTANT PROFESSOR

Department of Earth, Ocean and Atmospheric Science

Degree Institution: University of California–San Diego, Ph.D.

Research Interests: Understanding how seismic sources work and how they interact with each other.



RHYS PARFITT

ASSISTANT PROFESSOR

Department of Earth, Ocean and Atmospheric Science

Degree Institution: Imperial College London, Ph.D.

Research Interests: Atmosphere-ocean interactions and the basic physics of atmospheric and oceanic circulations. Also in large-scale climate variability on all timescales and the socioeconomic impact of extreme weather.



PAUL RENFRO

ASSISTANT PROFESSOR

Department of History

Degree Institution: University of Iowa, Ph.D.

Research Interests: The history of the United States since 1945, with specific interests in political and cultural history, gender/sexuality, the carceral state, and childhood and the family.



GUIQING HU

RESEARCH FACULTY I

Institute of Molecular Biophysics

Degree Institution: Chinese Academy of Sciences, Ph.D.

Research Interests: Resolving the 3D structures of macromolecules with Cryo-electron tomography and single particle 3D reconstruction.



TOM NEEDHAM

ASSISTANT PROFESSOR

Department of Mathematics

Degree Institution: University of Georgia, Ph.D.

Research Interests: Using topological and geometrical data analysis, applying tools from pure mathematics to study foundational problems in data science.

NEW FACULTY DIRECTORY 2019-2020

COLLEGE OF ARTS AND SCIENCES



MICHELLE BUMATAY

ASSISTANT PROFESSOR

Department of Modern Languages and Linguistics

Degree Institution: University of California–Los Angeles, Ph.D.

Research Interests: African and Diasporic literature, comics, film, and art history; media studies; post-colonialism; genocide and trauma studies; and migration and the Global South.



MICHAELA HULSTYN

ASSISTANT PROFESSOR

Department of Modern Languages and Linguistics

Degree Institution: Stanford University, Ph.D.

Research Interests: Twentieth and 21st-century French and Francophone literature, with an emphasis on philosophical and cognitive approaches to the self.



MATTHEW MEWHINNEY

ASSISTANT PROFESSOR

Department of Modern Languages and Linguistics

Degree Institution: University of California–Berkeley, Ph.D.

Research Interests: Lyric poetry, lyric theory, literati culture, and the relationship between prose and poetry in premodern and modern Japanese literature. Such concentrations speak to broader interests in literary translation, the imagination, subjectivity and the philosophy of form.



VANDANA TRIPATHI

ASSISTANT PROFESSOR

Department of Physics

Degree Institution: Jawahar Lal Nehru University, India, Ph.D.

Research Interests: The production and understanding of the structure of exotic nuclei, ones that are not naturally occurring but crucial to understanding nucleo-synthesis in the universe.



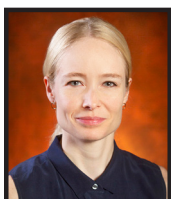
DAVID MARCH

ASSISTANT PROFESSOR

Department of Psychology

Degree Institution: University of Tennessee, Ph.D.

Research Interests: How people process threats to physical harm, unique from other types of stimuli, from a social cognitive perspective, and apply this distinction to further understanding other phenomena, such as prejudice and stereotyping.



SONIA HAZARD

ASSISTANT PROFESSOR

Department of Religion

Degree Institution: Duke University, Ph.D.

Research Interests: Religious print culture in the 19th century United States, and exploring questions of materiality, media technologies, the history of reading, and the everyday.

NEW FACULTY DIRECTORY 2019-2020

COLLEGE OF ARTS AND SCIENCES



LAURA MCTIGHE

ASSISTANT PROFESSOR

Department of Religion

Degree Institution: Columbia University, Ph.D.

Research Interests: The interdisciplinary studies of gender, race, religion, and social movements, and the often-hidden histories of struggle that fill our present and asks how practitioners use religion to organize and transform our world.



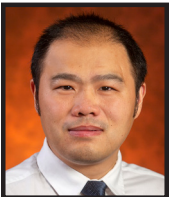
ANDRÉS FELIPE BARRIENTOS

ASSISTANT PROFESSOR

Department of Statistics

Degree Institution: Pontificia Universidad Católica de Chile, Ph.D.

Research Interests: Developing and studying methodological procedures in statistical science that incorporate flexible Bayesian modeling and approaches for data privacy, methodologically involving single and regression density estimation, hypothesis testing, massive data, probabilistic approaches for complex data, differentially private procedures, and synthetic data generators.



CHAO HUANG

ASSISTANT PROFESSOR

Department of Statistics

Degree Institution: University of North Carolina–Chapel Hill, Ph.D.

Research Interests: Statistical medical image data analysis including big data integration, imaging genetics, functional data analysis, machine learning, and deep learning.

COLLEGE OF BUSINESS



ZAHN BOZANIC

ASSOCIATE PROFESSOR

Department of Accounting

Degree Institution: Pennsylvania State University, Ph.D.

Research Interests: Corporate disclosure, debt contracting, information intermediaries, and regulation.



ALEKSANDRA ZIMMERMAN

ASSISTANT PROFESSOR

Department of Accounting

Degree Institution: Case Western Reserve University, Ph.D.

Research Interests: Auditing of public companies and nonprofits, the auditing profession and the labor market.

NEW FACULTY DIRECTORY 2019-2020

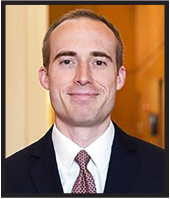
COLLEGE OF BUSINESS



ANGELA CHOI

ASSISTANT PROFESSOR

Department of Business Analytics, Information Systems and Supply Chain
Degree Institution: Korea Advanced Institute of Science and Technology, Ph.D.
Teaching Interests: Business analytics, empirical analyses, and statistical tools.



CASEY MARK DOUGAL

ASSISTANT PROFESSOR

Department of Finance
Degree Institution: University of North Carolina–Chapel Hill, Ph.D.
Research Interests: Behavioral finance and urban economics.



MAHSA KHOSHNOUD

TEACHING FACULTY I

Department of Finance
Degree Institution: University of Central Florida, Ph.D.
Research Interests: Asset pricing, behavioral finance, and real estate finance.



PAUL SCHRIEFER

TEACHING FACULTY I

Department of Risk Management, Real Estate and Legal Studies
Degree Institution: University of Georgia, J.D.
Research Interests: Insurance Law.

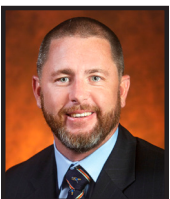


MELVIN STITH, JR.

TEACHING FACULTY I

Department of Risk Management, Real Estate and Legal Studies
Degree Institution: University of Georgia, Ph.D.
Research Interests: Corporate finance, financial management, legal environment of business, principles of risk management, corporate liability, and commercial law.

CENTER FOR ADVANCED POWER SYSTEMS



JODIE BELL

RESEARCH FACULTY II

Degree Institution: University of Hawaii–Manoa, Ph.D.
Research Interests: Power systems, electromagnetics, antennas and wave propagation, real-time simulation, and hardware-in-the-loop simulation.

NEW FACULTY DIRECTORY 2019-2020

CENTER FOR ADVANCED POWER SYSTEMS

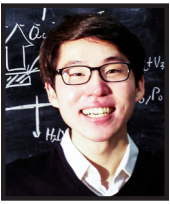


PETER CHEETHAM

RESEARCH FACULTY I

Degree Institution: Florida State University, Ph.D.

Research Interests: High voltage engineering, electrical insulation material, and superconducting power devices.



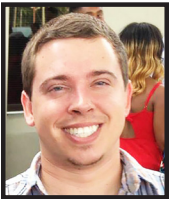
SAM YANG

RESEARCH FACULTY I

Degree Institution: Florida State University, PhD

Research Interests: Building technologies, data-driven models, design space exploration, entropy generation minimization, integrated energy systems, multi-fidelity modeling, solar energy, and thermal management.

COLLEGE OF COMMUNICATION AND INFORMATION



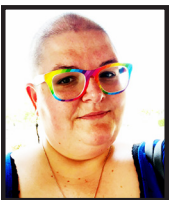
WILLIAM ENGLISH

INSTRUCTIONAL SPECIALIST I AND ASSISTANT DIRECTOR

School of Communication

Degree Institution: Valdosta State College, M.A.

Research Interests: Becoming an Assistant Director and working towards a more efficient School.



DAWN BETTS-GREEN

VISITING ASSISTANT PROFESSOR

School of Information

Degree Institution: Florida State University, Ph.D.

Research Interests: Radical librarianship, information access, LGBTQ resources and access, and librarianship in the rural U.S. South.

COLLEGE OF CRIMINOLOGY AND CRIMINAL JUSTICE



ERIN CASTRO

ASSISTANT PROFESSOR

Degree Institution: University of Florida, Ph.D.

Research Interests: Developmental and life course criminology with a focus on family context, parenting, and intimate partner violence.



SYLWIA PIATKOWSKA

ASSISTANT PROFESSOR

Degree Institution: State University of New York–Albany, Ph.D.

Research Interests: Crime and deviance, comparative and international criminology, hate crime, policing, social control, spatial analysis, and advanced quantitative methods.

NEW FACULTY DIRECTORY 2019-2020

DEDMAN SCHOOL OF HOSPITALITY



ALISHIA PIOTROWSKI

**TEACHING FACULTY I AND DIRECTOR, MARRIOTT
CAREER AND PROFESSIONAL DEVELOPMENT CENTER**

Degree Institution: Florida State University, Ed.D.

Research Interests: Leadership identity development and hospitality finance.

COLLEGE OF EDUCATION



TIMOTHY BAGHURST

**PROFESSOR AND DIRECTOR, INTERDISCIPLINARY
CENTER FOR ATHLETIC COACHING EXCELLENCE**

Dean's Office

Degree Institution: University of Arkansas, Ph.D.

Research Interests: Ethics and education in athletic coaching. Also studying male body image and the role that modeling health as health and sport professionals have on client outcomes.



ERIK HINES

ASSOCIATE PROFESSOR

Department of Educational Psychology and Learning Systems

Degree Institution: University of Maryland, Ph.D.

Research Interests: African-American male academic achievement, college readiness, and college completion; parental involvement and its impact on academic achievement for students of color; improving and increasing postsecondary opportunities for first-generation, low-income, and students of color (particularly African-American males).



LAURA MARKS

ASSISTANT PROFESSOR

Department of Educational Psychology and Learning Systems

Degree Institution: Purdue University, Ph.D.

Research Interests: Racial minority mental health, and career development/professional issues.



EUNHUI YOON

ASSISTANT PROFESSOR

Department of Educational Psychology and Learning Systems

Degree Institution: University of Florida, Ph.D.

Research Interests: Burnout experiences of school counselors of color, and school bullying.

NEW FACULTY DIRECTORY 2019-2020

FAMU-FSU COLLEGE OF ENGINEERING



STEPHEN HUGO ARCE

Department of Chemical and Biomedical Engineering

Degree Institution: University of Florida, Ph.D.

Research Interests: Engineering design, instrumentation, and social outreach.

TEACHING FACULTY II



RALM RICARTE

Department of Chemical and Biomedical Engineering

Degree Institution: University of Minnesota–Twin Cities, Ph.D.

Research Interests: Functional polymer materials.

ASSISTANT PROFESSOR



QIAN ZHANG

Department of Civil and Environmental Engineering

Degree Institution: University of Michigan, Ph.D.

Research Interests: Building materials, cementitious composites, sustainable and resilient structures, and fire safety.

ASSISTANT PROFESSOR



REBEKAH SWEAT

Department of Industrial and Manufacturing Engineering

Degree Institution: Florida State University, Ph.D.

Research Interests: Micromechanics, nanomaterials, composites, digital twin technology, predictive simulations, and multifunctional materials.

ASSISTANT PROFESSOR



UNNIKRISHNAN "UNNI" SASIDHARAN NAIR

Department of Mechanical Engineering

Degree Institution: Ohio State University, Ph.D.

Research Interests: Computational and theoretical studies of compressible fluid flows including turbulent jets and transitional boundary layers.

ASSISTANT PROFESSOR

COLLEGE OF FINE ARTS



JAMES FRAZIER

Dean's Office

Degree Institution: Temple University, Ph.D.

Research Interests: African American performance aesthetics, culture and history.

DEAN AND PROFESSOR

NEW FACULTY DIRECTORY 2019-2020

COLLEGE OF FINE ARTS



TRA BOUSCAREN

ASSISTANT PROFESSOR

Department of Art

Degree Institution: University of Pennsylvania, M.F.A.

Research Interests: Installation art, American spectacle, waste culture, surveillance, media ontology, aesthetics, critical theory and practices.



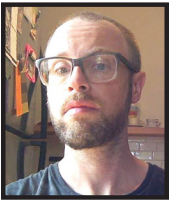
CRAIG "MARTY" FIELDING

VISITING TEACHING FACULTY I

Department of Art

Degree Institution: University of Florida, M.F.A.

Research Interests: Abstracting archetypal ceramic vessels through the lenses of architecture, painting, and experimental music, and also is engaged in both digital and analog approaches to working with clay.



DANIEL LUEDTKE

ASSISTANT PROFESSOR

Department of Art

Degree Institution: School of the Art Institute of Chicago, M.F.A.

Research Interests: Printmaking, video art, healthcare, insurance, HIV / AIDS, LGBTQ studies, and women's gender and sexuality studies.



KELLEY ROBINSON

ASSISTANT PROFESSOR

Department of Interior Architecture and Design

Degree Institution: Florida State University, M.F.A.

Research Interests: Interior design regulation issues and public policy.



CASEY HAGWOOD

TEACHING FACULTY I

School of Theatre

Degree Institution: University of Cincinnati College, M.F.A.

Research Interests: Generational management and effective delegation techniques for managers in the performing arts field.



KELLEN HOXWORTH

ASSISTANT PROFESSOR

School of Theatre

Degree Institution: Stanford University, Ph.D.

Research Interests: The intersections between performance studies, historiography, African and African American studies, post-colonial studies, and affect theory.

NEW FACULTY DIRECTORY 2019-2020

COLLEGE OF HUMAN SCIENCES



KANI DIOP

Department of Family and Child Sciences

Degree Institution: Montclair State University, Ph.D.

Research Interests: Concepts and meanings of culture, diversity, strengths, and challenges of families in global contexts.

TEACHING FACULTY I



JAMILA HOLCOMB

Department of Family and Child Sciences

Degree Institution: Florida State University, Ph.D.

Research Interests: Parenting, mental health and resiliency, child and adolescent development, trauma, diversity and cultural sensitivity, and family relationships.

TEACHING FACULTY I



LISA GRIFFITHS

Department of Nutrition, Food and Exercise Sciences

Degree Institution: Brunel University, London, Ph.D.

Research Interests: Exercise physiology, strength and conditioning, physical activity, and health.

TEACHING FACULTY I



LISA TRONE

Department of Nutrition, Food and Exercise Sciences

Degree Institution: Nova Southeastern University, D.HSc.

Research Interests: Clinical food service management in rehabilitation and long-term care facilities.

TEACHING FACULTY I



JASON WILLIAMS

Department of Nutrition, Food and Exercise Sciences

Degree Institution: United States Sports Academy, Ed.D.

Research Interests: Exercise physiology, strength and conditioning, and coaching science.

TEACHING FACULTY I

INSTITUTE OF SCIENCE AND PUBLIC AFFAIRS



MIRINE DYE

Center for Prevention and Early Intervention Policy

Degree Institution: Florida International University, M.P.H.

Research Interests: Public health, professional development, training, and health sciences, along with public safety.

RESEARCH FACULTY I

NEW FACULTY DIRECTORY 2019-2020

JIM MORAN SCHOOL OF ENTREPRENEURSHIP



SHELLY GRIFFIN

TEACHING FACULTY I

Degree Institution: Louisiana State University–Shreveport, M.B.A.

Research Interests: Business plan design, leadership and team building, small business mentoring, product development, customer acquisition/ marketing, and go-to market strategies.



TARA HACKETT

TEACHING FACULTY I

Degree Institution: University of Kentucky, M.S.

Research Interests: Product quality and supply chain development of apparel and textiles, and merchandising portfolio development with the use of computer applications.



SANDRA SOTO

INSTRUCTIONAL SPECIALIST / CORPORATE LIAISON

Degree Institution: St. John’s University, B.S.

Research Interests: Strategic planning, executive recruiting, corporate relations, leadership and team building, project management, and negotiation.

COLLEGE OF LAW



ELISSA GENTRY

ASSISTANT PROFESSOR

Degree Institution: Vanderbilt University, Ph.D.

Research Interests: The intersection of law, economics, and health, but especially in understanding the perception and regulation of health risks.



HILLARY POWELL

TEACHING FACULTY I AND LEGAL WRITING PROFESSOR

Degree Institution: Florida State University, J.D.

Research Interests: Legal writing and research.



ADRIA QUINTELA

TEACHING FACULTY I AND CO-DIRECTOR, EXTERNSHIP PROGRAMS

Degree Institution: Northwestern University, J.D.

Research Interests: Ethics and professionalism, interviewing skills and career management, and labor and employment law.

NEW FACULTY DIRECTORY 2019-2020

LEARNING SYSTEMS INSTITUTE



NAOMI IUHASZ-VELEZ

VISITING ASSISTANT IN RESEARCH

Degree Institution: University of Miami, Ph.D.

Research Interests: Mathematics education, professional development of teachers, students' conceptualization of mathematics, mathematical knowledge for teaching, and reform.



MARCELA ORTIZ

ASSISTANT IN RESEARCH

Degree Institution: Purdue University, M.S.

Research Interests: K-12 education, both domestic and international.

NATIONAL HIGH MAGNETIC FIELD LABORATORY (NHMFL)



SHREYAS BALACHANDRAN

VISITING RESEARCH FACULTY I

Degree Institution: Texas A&M University, Ph.D.

Research Interests: Understanding microstructure and property relationships related to advanced energy materials such as composite superconducting wires, materials for superconducting RF applications, and high strength and high conductivity conductors.

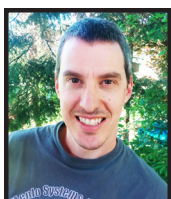


SHALINEE CHIKARA

RESEARCH FACULTY I

Degree Institution: University of Kentucky, Ph.D.

Research Interests: Understanding the emergent properties in novel quantum materials by synthesis, manipulation of their properties under extreme conditions of temperature, and magnetic field and pressure to map out the phases and phase transitions in these materials.



BERT GREEN

RESEARCH FACULTY I

Degree Institution: Karlsruhe Institut fur Technologie, Germany, Ph.D.

Research Interests: Developing high field superconducting magnets.



ELIZABETH GREEN

RESEARCH FACULTY I

Degree Institution: Florida State University, Ph.D.

Research Interests: Thermal characterization measurements and nuclear magnetic resonance of strongly correlated systems in high magnetic fields and ultra-low temperatures.

NEW FACULTY DIRECTORY 2019-2020

NATIONAL HIGH MAGNETIC FIELD LABORATORY (NHMFL)

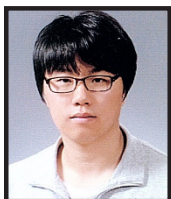


KWANG LOK KIM

VISITING RESEARCH FACULTY I

Degree Institution: Korea University, South Korea, Ph.D.

Research Interests: Design, testing, and analysis on the high temperature superconducting (HTS) coils/magnets, and investigating the electrical/mechanical performances of no-insulation (NI) HTS coils/magnets and post-mortem on HTS tapes.



KWANGMIN KIM

VISITING RESEARCH FACULTY I

Degree Institution: Changwon National University, South Korea, Ph.D.

Research Interests: Superconducting magnet technologies for HTS REBCO tape research for high field magnets, no-insulation magnet development, and performance evaluation of superconducting magnets.



RONGMEI NIU

VISITING RESEARCH FACULTY I

Degree Institution: Xi'an Jiaotong University, China, Ph.D.

Research Interests: High strength and high conductivity materials, high strength reinforcement materials, nanocrystalline materials, mechanical properties, deformation mechanisms, phase transformations, synthesis and characterization of thin films, and nanostructured materials.

COLLEGE OF MEDICINE



RUSSELL BRADBURY

RESEARCH FACULTY I

Department of Behavioral Sciences and Social Medicine

Degree Institution: Florida State University, M.S.

Research Interests: Data management, analysis, and reporting.



NICOLE ENNIS

ASSOCIATE PROFESSOR

Department of Behavioral Sciences and Social Medicine

Degree Institution: Kent State University, Ph.D.

Research Interests: Improving patient care among medically underserved populations through evidence-based behavioral interventions in the context of learning healthcare systems.



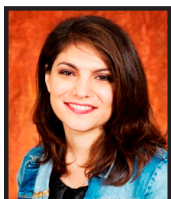
M. BRYANT HOWREN

ASSOCIATE PROFESSOR

Department of Behavioral Sciences and Social Medicine

Degree Institution: University of Iowa, Ph.D.

Research Interests: Improving the understanding of challenges faced by rural-residing individuals, including the identification of disparities in health outcomes and development of evidence-based practices to enhance delivery of healthcare services to those in rural areas.



MARTINA LUCHETTI

RESEARCH FACULTY I

Department of Behavioral Sciences and Social Medicine

Degree Institution: University of Bologna, Italy, Ph.D.

Research Interests: Identification of clinical, behavioral and psychosocial factors influencing cognitive health and aging processes, particularly how personality factors, stress and behaviors, such as alcohol consumption, affect cognitive change and decline in older adults.

NEW FACULTY DIRECTORY 2019-2020

COLLEGE OF MEDICINE



CORENE MCGOODEN

CLINICAL ASSISTANT PROFESSOR

Department of Behavioral Sciences and Social Medicine

Degree Institution: Florida State University, M.S.W., L.C.S.W.

Research Interests: Licensed clinical social worker, and behavioral health.



JEROME IRIANTO

ASSISTANT PROFESSOR

Department of Biomedical Sciences

Degree Institution: Queen Mary University of London, Ph.D.

Research Interests: Cancer mechanobiology, and genomics.



EMILY PRITCHARD

RESEARCH FACULTY I

Department of Biomedical Sciences

Degree Institution: University of Tennessee–Knoxville, Ph.D.

Research Interests: Clinical application of new devices, sensing and imaging modalities, machine learning for diagnostics and therapeutics, encouraging a collaborative, design-thinking approach to translational research and new product development.



YUE "JULIA" WANG

ASSISTANT PROFESSOR

Department of Biomedical Sciences

Degree Institution: Johns Hopkins University, Ph.D.

Research Interests: Single-cell RNA-seq and other genomic approaches to study the molecular mechanism of diabetes.



XIAO QI WANG

RESEARCH FACULTY II

Department of Biomedical Sciences

Degree Institution: University of Oxford, England, Ph.D.

Research Interests: Cancer research with cancer cell-derived induced pluripotent stem cell (iPSC) model.



CHARLES FLEISCHER

ASSISTANT PROFESSOR

Department of Family Medicine and Rural Health

Degree Institution: Ross University, M.D.

Research Interests: Preventive medicine and global health.



TRACEY HELLGREN

CLINICAL ASSISTANT PROFESSOR

FSU Primary Health Clinic

Degree Institution: University of Florida, M.D.

Research Interests: Medicine, and family medicine.

NEW FACULTY DIRECTORY 2019-2020

COLLEGE OF MEDICINE



HEIDI KINSELL

ASSISTANT PROFESSOR

Department of Geriatric Medicine

Degree Institution: University of Florida, Ph.D.

Research Interests: Health services research, and health administration.



NATALIE RIVERA-MORALES

CLINICAL ASSISTANT PROFESSOR

Immokalee Health Education Site

Degree Institution: Carlos Albizu University, Puerto Rico, Ph.D.

Research Interests: Clinical health psychology and integrated primary care.



NICOLE BENTZE

ASSOCIATE PROFESSOR AND ASSISTANT DEAN

Sarasota Regional Medical School Campus

Degree Institution: Philadelphia College of Osteopathic Medicine, D.O.

Research Interests: Medicine, and family medicine.



COURTNEY BENNETT-WILKE

ASSISTANT PROFESSOR

School of Physician Assistant Practice

Degree Institution: University of Florida, M.S.

Research Interests: Clinical practice in hospital medicine, endocrinology, and urgent care.



DEBRA COLE

ASSISTANT PROFESSOR

School of Physician Assistant Practice

Degree Institution: University of Florida, M.S.

Research Interests: Physician assistant, evidence-based medicine and simulation.



NATHAN FALK

ASSOCIATE PROFESSOR AND PROGRAM DIRECTOR

Winter Haven Hospital Family Medicine Residency Program

Degree Institution: Nebraska Medical Center, M.D.

Research Interests: Medicine, family medicine, and graduate medical education.

COLLEGE OF MUSIC



MICHAEL HANAWALT

ASSOCIATE PROFESSOR AND DIRECTOR, GRADUATE ACTIVITIES

Music Education, Therapy and Contemporary Media

Degree Institution: Florida State University, Ph.D.

Research Interests: The music of Estonian composer Veljo Tormis and its relationship to Estonian history and culture.

NEW FACULTY DIRECTORY 2019-2020

COLLEGE OF MUSIC



GILAD RABINOVITCH

ASSISTANT PROFESSOR

Music Theory and Composition

Degree Institution: University of Rochester, Ph.D.

Research Interests: Eighteenth-century schemata and the reconstruction of historical improvisation.



LILIYA UGAY

ASSISTANT PROFESSOR

Music Theory and Composition

Degree Institution: Yale University, D.M.U.

Research Interests: Composer with creative output that includes orchestra, chamber music, and opera with primary inspiration from themes of immigration and family; pianist and scholar with performance and research focusing on Soviet music of oppressed composers.



PANAYOTIS LEAGUE

ASSISTANT PROFESSOR

Musicology

Degree Institution: Harvard University, Ph.D.

Research Interests: Ethnomusicology specializing in the music, oral poetry, and dance traditions of Greece, Northeastern Brazil, and Gaelic-speaking Ireland.



GEORGE SPEED

ASSISTANT PROFESSOR

Strings and Orchestra

Degree Institution: Boston University, M.M.

Research Interests: Classical double bassist whose research interests include the cello sonatas of Antonio Vivaldi, which he has transcribed for bass and recorded for commercial release.

COLLEGE OF NURSING



LEEANN BARFIELD

TEACHING FACULTY II

Degree Institution: University of South Alabama, D.N.P.

Teaching interests: Complex care issues in adults and patient outcomes in the critically ill population.



MARSHA HARTLINE

VISITING TEACHING FACULTY II

Degree Institution: Samford University, D.N.P.

Teaching interests: Improving quality measures, increasing nurse retention, healthy work environments and workplace culture, and decreasing workplace violence in hospitals.

NEW FACULTY DIRECTORY 2019-2020

COLLEGE OF NURSING



TARA HAYES

TEACHING FACULTY II

Degree Institution: Samford University, D.N.P.

Teaching interests: Nursing care of the cardiac patient specifically in the area of heart failure education.

COLLEGE OF SOCIAL SCIENCES AND PUBLIC POLICY



MACKENZIE ALSTON

ASSISTANT PROFESSOR

Department of Economics

Degree Institution: Texas A& M University, Ph.D.

Research Interests: Labor, education, and experimental/behavioral economics.



MATTHEW GENTRY

ASSOCIATE PROFESSOR

Department of Economics

Degree Institution: Vanderbilt University, Ph.D.

Research Interests: Industrial organization and applied econometrics, with a particular interest in analysis of auction markets.



BRENDA POSTHUMUS

INSTRUCTIONAL SPECIALIST I

Florida Center for Public Management

Degree Institution: University of South Florida, M.Ed.

Research Interests: Curriculum design and instruction.



MABEL GERGAN

ASSISTANT PROFESSOR

Department of Geography

Degree Institution: University of North Carolina–Chapel Hill, Ph.D.

Research Interests: The Himalayan region, indigenous youth, hazards and precarity, climate justice, post-colonial environmental politics, and race and ethnicity in South Asia.



BRADFORD JOHNSON

ASSISTANT PROFESSOR

Department of Geography

Degree Institution: University of Georgia, Ph.D.

Research Interests: Land surface-atmospheric interactions, urban climatology, and Geographic Information Systems applications.

NEW FACULTY DIRECTORY 2019-2020

COLLEGE OF SOCIAL SCIENCES AND PUBLIC POLICY



SAGE PONDER

Department of Geography

Degree Institution: University of British Columbia, Canada, Ph.D.

Research Interests: Geographies of racial capitalism and finance.

ASSISTANT PROFESSOR



SANDY WONG

Department of Geography

Degree Institution: University of Illinois–Urbana Champaign, Ph.D.

Research Interests: Health inequalities, social processes of disablement and mobility, environmental influences on health, mixed quantitative and qualitative methods, and health GIS.

ASSISTANT PROFESSOR



CHRISTOPHER LI

Department of Political Science

Degree Institution: Northwestern University, Ph.D.

Research Interests: Political economy, American politics, and game theory.

ASSISTANT PROFESSOR



CAROLYN ROUSH

Department of Political Science

Degree Institution: Vanderbilt University, Ph.D.

Research Interests: American politics, public opinion, political psychology, political parties and polarization.

ASSISTANT PROFESSOR



MICHELLE WHYMAN

Department of Political Science

Degree Institution: University of Texas–Austin, Ph.D.

Research Interests: American political institutions, and public policy.

ASSISTANT PROFESSOR

DIVISION OF UNDERGRADUATE STUDIES



MICHAEL FRANKLIN

Honors

Degree Institution: University of Minnesota, Ph.D.

Research Interests: Critical education studies, academic advising, medical humanities, American studies, gender studies, women’s studies, sexuality studies, honors education, and undergraduate research support.

INSTRUCTIONAL SPECIALIST I

NEW FACULTY DIRECTORY 2019-2020

DIVISION OF UNDERGRADUATE STUDIES



ARIANNE QUINN
Honors

TEACHING FACULTY I

Degree Institution: Princeton University, Ph.D.

Research Interests: American and British musical theatre from 1920-1960, Kurt Weill's works, Native American music of the Southwest, musical semiotics, and gender and sexuality.

UNIVERSITY LIBRARIES



GALE ETSCHMAIER
Office of the Dean

DEAN AND UNIVERSITY LIBRARIAN

Degree Institution: University of Pennsylvania, Ph.D.

Research Interests: Expanding collaborations across the campus and creating more experiential learning and scholarship opportunities.



ELIZABETH BOATRIGHT

**ASSOC UNIVERSITY LIBRARIAN AND
DIRECTOR, SERVICE STRATEGIES**

Research and Learning Services

Degree Institution: Indiana University, M.L.S.

Research Interests: Leadership and management in non-profits, especially libraries.



ELIZABETH DUNNE

**ASSISTANT UNIVERSITY LIBRARIAN AND
INSTRUCTION AND REFERENCE LIBRARIAN**

Research and Learning Services

Degree Institution: Florida State University, M.L.S.

Research Interests: Critical information literacy, problem-based and game-based learning, and open pedagogy.



PREETHI GORECKI

**ASSISTANT UNIVERSITY LIBRARIAN AND
STUDENT ENGAGEMENT LIBRARIAN**

Research and Learning Services

Degree Institution: University of Western Ontario, Canada, M.L.S.

Research Interests: Practices for diversifying librarianship, project and task management tools and techniques for everyday academic librarianship, and student engagement as related to student wellness.

NEW FACULTY DIRECTORY 2019-2020

UNIVERSITY LIBRARIES



CAMILLE THOMAS

**ASSISTANT UNIVERSITY LIBRARIAN AND
SCHOLARLY COMMUNICATIONS LIBRARIAN**

Technology and Digital Scholarship

Degree Institution: Florida State University, M.L.S.

Research Interests: Copyright, open access, data stewardship, user experience, leadership and diversity, and equity and inclusion in librarianship.

NOTES

NOTES

IMPORTANT CONTACT INFORMATION

HR Benefits Office	www.hr.fsu.edu	644-4015
Last name A–G — Donna Grubb		644-9615
Last name H–O — Kathy Worthman		644-8732
Last name P–Z — Kendrea Atkins		644-5726
HR Retirement Office	hr.fsu.edu	644-4015
Office of Faculty Development and Advancement	fda.fsu.edu	644-6876
CANVAS	campus.fsu.edu	help@campus.fsu.edu or 644-4357
myFSU Portal Help Desk	servicecenter.fsu.edu	644-HELP
Transportation and Parking Services	transportation.fsu.edu	644-5278
FSU Card Center	fsucard.fsu.edu	644-7777
Directory Assistance (on-campus)	www.fsu.edu/directory	644-2525
Emergency Information (as needed)	alerts.fsu.edu	644-INFO (4636)
FSU Police Emergency — 911		
FSU Police, Non-Emergency		644-1234
Employee Assistance Program (EAP)	eap.fsu.edu	644-2288
Report Student Issue	report.fsu.edu	

FDA Twitter:

FSU Faculty Development
@FSUFacultyAward and #FSUFaculty

FDA Facebook:

FSU Faculty Development

FDA Blog:

<https://fsufacultydevelopment.wordpress.com/blog/>

FDA Newsletter:

<https://fda.fsu.edu/newsletter>

FSU ADMINISTRATION
2019-2020

University President	John Thrasher
Provost and Executive Vice President for Academic Affairs	Sally E. McRorie
Vice President for Faculty Development and Advancement	Janet Kistner
Vice President for Finance and Administration	Kyle Clark
Vice President for Institutional Advancement	Tom Jennings
Vice President for Research	Gary Ostrander
Vice President for Student Affairs	Amy Hecht
College of Applied Studies/Panama City (FL) Campus	Dean Randy Hanna
College of Arts and Sciences	Dean Sam Huckaba
College of Business	Dean Michael Hartline
College of Communication and Information	Dean Lawrence Dennis
College of Criminology and Criminal Justice	Dean Thomas Blomberg
College of Education	Dean Damon Andrew
FAMU-FSU College of Engineering	Dean J. Murray Gibson
Jim Moran School of Entrepreneurship	Director Susan Fiorito
College of Fine Arts	Dean James Frazier
Dedman School of Hospitality	Director Don Farr
College of Human Sciences	Dean Michael Delp
College of Law	Dean Erin O'Hara O'Connor
College of Medicine	Dean John Fogarty
College of Motion Picture Arts	Dean Reb Braddock
College of Music	Dean Patricia Flowers
College of Nursing	Interim Dean Laurie Grubbs
College of Social Sciences and Public Policy	Dean Tim Chapin
College of Social Work	Dean James Clark
Division of Undergraduate Studies	Dean Karen Laughlin
The Graduate School	Dean Mark Riley
University Libraries	Dean Gale Etschmaier