

# New Faculty Orientation

*August 2018*



# NEW FACULTY ORIENTATION AGENDA

Monday, August 20th – 208 TURNBULL CONFERENCE CENTER

8:00 a.m. Registration and Breakfast



9:00 a.m. Welcome

Janet Kistner  
*Vice President for Faculty  
Development and Advancement*



9:05 a.m. President's Welcome

John E. Thrasher  
*University President*



9:25 a.m. Provost's Welcome  
Expectations for Promotion and  
Tenure, and Specialized Faculty Promotions

Sally E. McRorie  
*Provost and Executive Vice  
President for Academic Affairs*



9:45 a.m. Office of Research

W. Ross Ellington  
*Associate Vice President for Research*



10:00 a.m. Student Affairs

Amy Hecht  
*Vice President for Student Affairs*

**10:15 a.m. BREAK**



10:30 a.m. Finance and Administration

Kyle Clark  
*Vice President for Finance and  
Administration*



10:45 a.m. Equal Opportunity and Diversity

Renisha Gibbs  
*Associate Vice President, Human Resources and  
Chief of Staff, Finance and Administration*



11:00 a.m. Title IX Issues

Mandy Hambleton  
*Title IX Director*



11:15 a.m. Campus Safety and Responding  
to Student Issues

Deputy Chief Terri Brown  
*Deputy Chief of Police*

and



Vicki Dobiaynski  
*Dean of Students*

# NEW FACULTY ORIENTATION AGENDA

**Monday, August 20th – 208 TURNBULL CONFERENCE CENTER (continued)**



11:35 a.m. The Graduate School

Mark Riley  
*Dean, The Graduate School*

11:50 a.m. Support for Faculty Development

Janet Kistner  
*Vice President for Faculty  
Development and Advancement*



11:55 a.m. Opening Nights Giveaway

Michael Blachly  
*Director, Opening Nights at FSU*

**12:00 p.m. LUNCHEON**

Breakout Sessions: **Group A**, Room 103; **Group B**, Room 214; **Group C**, Room 205  
>>> these correlate to your nametag dot color <<<

1:00 Session #1

**1:45 BREAK**

2:00 Session #2

**2:45 BREAK**

3:00 Session #3

**3:45 BREAK**

## **Group A – Tenure-Track Faculty, Room 103**

Session 1: 1:00pm-1:45pm	Undergraduate Teaching – Leslie Richardson
Session 2: 2:00pm-2:45pm	Promotion and Tenure – Janet Kistner
Session 3: 3:00pm-3:45pm	Office of Research – Beth Hodges

## **Group B – Teaching Specialized Faculty, Room 214**

Session 1: 1:00pm-1:45pm	Promotion – Janet Kistner
Session 2: 2:00pm-2:45pm	Undergraduate Teaching – Leslie Richardson
Session 3: 3:00pm-3:45pm	Undergraduate Teaching – Leslie Richardson

## **Group C – Research and Research Support Specialized Faculty, Room 205**

Session 1: 1:00pm-1:45pm	Office of Research – Beth Hodges
Session 2: 2:00pm-2:45pm	Office of Research – Beth Hodges
Session 3: 3:00pm-3:45pm	Promotion – Janet Kistner

Librarians and others with no dot may participate in any of the breakout sessions above, or leave for the day.

*(Please return to room 208 for the presentation on Insurance, Benefits, and Retirement.  
Those who have already signed up are welcome to leave for the day.)*

# NEW FACULTY ORIENTATION AGENDA

## Monday, August 20th – 208 TURNBULL CONFERENCE CENTER (continued)



4:00 p.m. HR—Insurance and Benefits (optional)

Kathy Worthman



HR—Retirement (optional)

Michael Horgan

5:00 p.m. Program Ends for the Day

## Tuesday, August 21st – 208 TURNBULL CONFERENCE CENTER

8:30 a.m. Registration and Breakfast



9:00 a.m. Welcome from the Faculty Senate

Todd Adams  
*Faculty Senate President  
Professor, Department of Physics*



9:10 a.m. United Faculty of Florida

Matthew Lata  
*President, UFF-FSU Chapter  
Professor, College of Music*



9:20 a.m. University Libraries

Susannah Miller  
*Interim Dean, University Libraries*



9:35 a.m. International Programs

James Pitts  
*Director, International Programs*



9:40 a.m. General Academics

Jennifer Buchanan  
*Associate Vice President for Faculty  
Development and Advancement*

**10:10 a.m. BREAK**



10:30 a.m. Project Resilience

Karen Oehme  
*Director, Institute for Family Violence Studies*



# NEW FACULTY ORIENTATION AGENDA

## Tuesday, August 21st – 208 TURNBULL CONFERENCE CENTER (continued)



10:45 a.m. Designing Learning for Our Students –  
Student Success

Karen Laughlin  
*Dean, Undergraduate Studies*



Leslie Richardson  
*Director, Center for the Advancement of Teaching*



Joe O'Shea  
*Assistant Provost*

Student Panel

11:45 a.m. LUNCHEON



12:45 p.m. FEAS Workshop

Tiffany Phillips  
*IT Support Specialist, Office  
of Faculty Development & Advancement*

2:00 p.m. BREAK



2:15 p.m. CANVAS Workshop

John Braswell  
*Blackboard/CANVAS User  
Support Administrator*

3:30 p.m. Program Ends for the Day

## Wednesday, August 22nd

5:00–7:00 p.m. **President's New Faculty Social**

FSU Alumni Center  
*Hosted by President John and Mrs. Jean Thrasher*

7:30–9:30 p.m. **Community Welcome Reception** 22nd Floor, Florida State Capitol Building  
*Hosted by the Tallahassee Chamber of Commerce  
(Parking available at Kleman Plaza, \$1 fee)*

## Saturday, August 25th – TURNBULL CONFERENCE CENTER

5:30–8:00 p.m. **Provost's New Faculty Dinner**

*Hosted by Provost Sally E. McRorie*

## ***SPEAKER DIRECTORY (ALPHABETICAL)***

<b>TODD ADAMS</b> tadams@fsu.edu — 315 Keen Bldg. — MC: 4350 — 644-7159	<i>facsenate.fsu.edu</i>	<i>Faculty Senate President Professor, Department of Physics</i>
<b>JOHN BRASWELL</b> jbraswell@campus.fsu.edu — 3500 University Center Bldg. C — MC: 2550 — 645-0469	<i>campus.fsu.edu</i>	<i>Blackboard/CANVAS User Support Administrator</i>
<b>DEPUTY CHIEF TERRI BROWN</b> tsbrown@fsu.edu — 108 Tanner Hall–Public Safety Bldg. — MC: 4280 — 644-1602	<i>police.fsu.edu</i>	<i>Deputy Chief of Police</i>
<b>JENNIFER BUCHANAN</b> jbuchanan@admin.fsu.edu — 115 Westcott Bldg. — MC: 1480 — 644-6876	<i>fda.fsu.edu</i>	<i>Associate Vice President for Faculty Development and Advancement</i>
<b>KYLE CLARK</b> kyle.clark@fsu.edu — 214 Westcott Bldg. — MC: 1320 — 644-4444	<i>vpfa.fsu.edu</i>	<i>Vice President for Finance and Administration</i>
<b>VICKI DOBIYANSKI</b> vdobiyanski@admin.fsu.edu — 4301 University Center Bldg. A — MC: 2440 — 644-2428	<i>dos.fsu.edu</i>	<i>Dean of Students</i>
<b>W. ROSS ELLINGTON</b> wellington@fsu.edu — 3021 Westcott Bldg. — MC: 1330 — 645-6900	<i>research.fsu.edu</i>	<i>Associate Vice President for Research</i>
<b>RENISHA GIBBS</b> rgibbs@admin.fsu.edu — 6200 University Center Bldg. A — MC: 2410 — 644-8082	<i>hr.fsu.edu</i>	<i>Associate Vice President, Human Resources; Chief of Staff, Finance and Administration</i>
<b>MANDY HAMBLETON</b> mhambleton@fsu.edu — 408H Westcott Bldg. — MC: 1340 — 644-6271	<i>knowmore.fsu.edu/title-ix</i>	<i>Director, Title IX</i>
<b>AMY HECHT</b> ahecht@fsu.edu — 313 Westcott Bldg. — MC: 1340 — 644-5590	<i>studentaffairs.fsu.edu</i>	<i>Vice President for Student Affairs</i>
<b>JANET KISTNER</b> jkistner@fsu.edu — 211 Westcott Bldg. — MC: 1480 — 644-5196	<i>fda.fsu.edu</i>	<i>Vice President for Faculty Development and Advancement</i>
<b>MATTHEW LATA</b> mlata@admin.fsu.edu — 202N Housewright Music Bldg. — MC: 1180 — 644-0408	<i>uff-fsu.org</i>	<i>UFF-FSU Chapter; Professor, College of Music</i>
<b>KAREN LAUGHLIN</b> klaughlin@admin.fsu.edu — 3300 University Center Bldg. A — MC: 2460 — 644-6412	<i>undergrad.fsu.edu</i>	<i>Dean of Undergraduate Studies</i>
<b>SALLY MCRORIE</b> smcrorie@fsu.edu — 212K Westcott Bldg. — MC: 1310 — 644-1259	<i>provost.fsu.edu</i>	<i>Provost and Executive Vice President for Academic Affairs</i>
<b>SUSANNAH MILLER</b> scmiller@admin.fsu.edu — 314J Strozier Library Bldg. — MC: 2047 — 645-8404	<i>lib.fsu.edu</i>	<i>Interim Dean, University Libraries</i>
<b>KAREN OEHME</b> koehme@fsu.edu — 2501C Medical Sciences Bldg. — MC: 4300 — 644-6303	<i>familyvio.csw.fsu.edu</i>	<i>Director, Institute for Family Violence Studies</i>
<b>JOE O'SHEA</b> joshea@fsu.edu — 212F Westcott Bldg. — MC: 1310 — 645-8118	<i>provost.fsu.edu</i>	<i>Assistant Provost and Assistant Vice President for Academic Affairs</i>
<b>TIFFANY PHILLIPS</b> tphillips@fsu.edu — 115 Westcott Bldg. — MC: 1480 — 645-8203	<i>fda.fsu.edu</i>	<i>IT Support Specialist, Faculty Development and Advancement</i>
<b>JAMES PITTS</b> jpitts@admin.fsu.edu — 5500 University Center Bldg. A — MC: 2420 — 644-0538	<i>international.fsu.edu</i>	<i>Director, International Programs</i>
<b>LESLIE RICHARDSON</b> larichardson@fsu.edu — 432B Diffenbaugh Bldg. — MC: 1310 — 645-2306	<i>provost.fsu.edu</i>	<i>Founding Director, Center for the Advancement of Teaching</i>
<b>MARK RILEY</b> mriley@admin.fsu.edu — 314 Westcott Bldg. — MC: 1410 — 644-3501	<i>gradschool.fsu.edu</i>	<i>Dean of The Graduate School</i>
<b>JOHN THRASHER</b> jthrasher@fsu.edu — 211 Westcott Bldg. — MC: 1470 — 644-1085	<i>president.fsu.edu</i>	<i>University President</i>

# NEW FACULTY DIRECTORY 2018-2019

## COLLEGE OF APPLIED STUDIES — PANAMA CITY, FL CAMPUS



**BRIAN PARKER**

Department of Communication

Degree Institution: University of Florida, Ph.D.

Research Interests: Communication theory, research methods, and strategy.

VISITING TEACHING FACULTY I



**ELIZABETH CROWE**

Department of Education

Degree Institution: Florida State University, Ph.D.

Research Interests: Reading and math instruction and individual differences, and gifted and talented students.

TEACHING FACULTY I



**ROBERT CVORNYEK**

Department of History

Degree Institution: Columbia University, Ph.D.

Research Interests: History and political science.

ADJUNCT



**AZIZE AKCAYOGLU**

Department of Mechanical Engineering

Degree Institution: Çukurova University, Turkey, Ph.D.

Research Interests: Mechanical engineering.

TEACHING FACULTY I



**DAMION DUNLAP**

Department of Mechanical Engineering

Degree Institution: Florida A&M University, Ph.D.

Research Interests: Planning, navigation, and task allocation for unmanned robotic systems with particular focus on underwater and surface naval applications; and, autonomy behavior development for multi-agent robotic systems under kinodynamic constraints.

TEACHING FACULTY I



**LONNIE HODGES**

Nurse Anesthesia Program

Degree Institution: University of North Florida, D.N.P.

Research Interests: Labor analgesia.

TEACHING FACULTY I



**LEAH KOEHLER**

Department of Psychology

Degree Institution: University of Florida, M.S.

Research Interests: Refinement of instructional methods for practitioners, generalization and maintenance of clinical skills, and translational research in assessment and treatment of problem behavior.

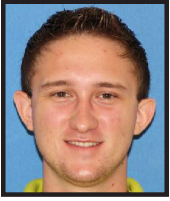
TEACHING FACULTY I

# NEW FACULTY DIRECTORY 2018-2019

---

## COLLEGE OF APPLIED STUDIES — PANAMA CITY, FL CAMPUS

---



**KOLTON SELLERS**  
Department of Psychology  
Degree Institution: Florida State University, M.A.  
Research Interests: Psychology.

ADJUNCT



**JOHN ANDREWS**  
Department of Public Safety and Security  
Degree Institution: Cleveland State University, J.D.  
Research Interests: Teaching intelligence for law enforcement.

VISITING TEACHING FACULTY I



**DAVID FISTEIN**  
Department of Social Sciences and Public Policy  
Degree Institution: University of Missouri, Ph.D.  
Research Interests: Political science, international relations and sociology.

ADJUNCT



**LISA JOHNSON**  
Department of Social Work  
Degree Institution: Florida State University, Ph.D.  
Research Interests: Child maltreatment and children's advocacy.

TEACHING FACULTY I



**MARITZA PAYANO**  
Department of Spanish  
Degree Institution: Universidad del Este Carolina, Puerto Rico, M.A.  
Research Interests: Spanish and ESOL endorsement.

ADJUNCT



**DANIEL GEORGIADIS**  
Systems Engineering Program  
Degree Institution: George Washington University, Ph.D.  
Research Interests: A methodical, multidisciplinary approach for the design, realization, technical management, operations, and retirement of a system encompassing the entire technical effort to evolve into and verify an integrated and life-cycle balanced set of system people, products and process solutions that satisfy customer needs.

TEACHING FACULTY I

---

## COLLEGE OF ARTS AND SCIENCES

---



**COL. RODNEY SINGLETON**  
Department of Aerospace  
Degree Institution: Naval War College, M.A.  
Research Interests: Leadership development and military history.

PROFESSOR AND CHAIR

# NEW FACULTY DIRECTORY 2018-2019

## COLLEGE OF ARTS AND SCIENCES



**JAYUR MEHTA**

Department of Anthropology

Degree Institution: Tulane University, Ph.D.

Research Interests: Native Americans before and after European contact, Anthropocene, human-environment interaction, and historic preservation.

**ASSISTANT PROFESSOR**



**ERDEM BANGI**

Department of Biological Science

Degree Institution: Brown University, Ph.D.

Research Interests: Modeling the genetic complexity and diversity of colorectal cancer in *Drosophila* and cancer drug discovery.

**ASSISTANT PROFESSOR**



**AMBER BROWN**

Department of Biological Science

Degree Institution: Florida State University, Ph.D.

Research Interests: How genomics and epigenomics influence an organism's morphology, health and behavior.

**ASSISTANT IN RESEARCH**



**MARIE CHARREL-DENNIS**

Department of Biological Science

Degree Institution: University College, London, Ph.D.

Research Interests: Learning and teaching immunology and particularly innate immunity, and more recently teaching biology to science majors and non-majors.

**TEACHING FACULTY I**



**XIAOFENG FU**

Department of Biological Science

Degree Institution: Wuhan University, China, Ph.D.

Research Interests: Management of the BSIR (biological science imaging resource) with cryoEM, SEM and confocal light microscopes.

**ASSOCIATE IN RESEARCH**



**DANIEL OKAMOTO**

Department of Biological Science

Degree Institution: University of California–Santa Barbara, Ph.D.

Research Interests: Population dynamics, mostly in marine fish, invertebrates and algae, integrating field and laboratory approaches with statistics and mathematical modeling, working toward applications in conservation and resource management.

**ASSISTANT PROFESSOR**



**XINSONG LIN**

Department of Chemistry and Biochemistry

Degree Institution: Chinese Academy of Sciences, Ph.D.

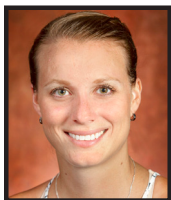
Research Interests: Design, synthesis, and potential applications of nonlinear optical materials and solid-state functional materials.

**RESEARCH FACULTY II**



# NEW FACULTY DIRECTORY 2018-2019

## COLLEGE OF ARTS AND SCIENCES



**LEA NIENHAUS**

**ASSISTANT PROFESSOR**

Department of Chemistry and Biochemistry

Degree Institution: University of Illinois–Urbana-Champaign, Ph.D.

Research Interests: Aiming to understand the detailed optoelectronic properties of semiconductors at the nanoscale, and their interactions in the ensemble. Work will be based on novel tip-enhanced microscopy to probe the cause of reduced efficiencies in optoelectronic devices made of emerging (nano-) materials.



**ROBERT SILVERS**

**ASSISTANT PROFESSOR**

Department of Chemistry and Biochemistry

Degree Institution: Goethe University, Frankfurt, Germany, Ph.D.

Research Interests: The structure-function relationship of RNA and ribonucleoproteins.



**JOEL SMITH**

**ASSISTANT PROFESSOR**

Department of Chemistry and Biochemistry

Degree Institution: University of California–Los Angeles, Ph.D.

Research Interests: The art and science of fundamental organic chemistry, with primary research foci including complex molecule construction and reaction invention with a focus on synthetic efficiency.



**MICHAEL FURMAN**

**TEACHING FACULTY I**

Department of Classics

Degree Institution: University of St. Andrews, Scotland, Ph.D.

Research Interests: The history and archaeology of Boeotia with a focus on Thebes in the fourth century B.C., and also in Greek and Roman warfare and ancient military equipment.



**ELIZABETH MURPHY**

**ASSISTANT PROFESSOR**

Department of Classics

Degree Institution: Brown University, Ph.D.

Research Interests: Classical archaeologist specializing in the study of Roman work, labor, and economy, with projects spanning the ancient Mediterranean world from Israel to Italy.



**GOKILA DORAI**

**VISITING TEACHING FACULTY I**

Department of Computer Science

Degree Institution: Florida State University, M.S.

Research Interests: Mobile forensics, information security, data mining, machine learning on mobile platforms and digital forensics. More recently, developing novel tools and techniques to make mobile forensic investigation easier, quicker, and more productive for investigators.



**XIFENG GAO**

**ASSISTANT PROFESSOR**

Department of Computer Science

Degree Institution: University of Houston, Ph.D.

Research Interests: Geometry processing, such as computer graphics, visualization, multimedia processing, medical imaging, information forensics, and digital fabrication.



# NEW FACULTY DIRECTORY 2018-2019

---

## COLLEGE OF ARTS AND SCIENCES

---



**MICHAEL GUBANOV**

**ASSISTANT PROFESSOR**

Department of Computer Science

Degree Institution: University of Washington, Ph.D.

Research Interests: Large-scale data management (big data), AI, NLP, web-search, cloud computing, and mobile health.



**LINDSEY ECKERT**

**ASSISTANT PROFESSOR**

Department of English

Degree Institution: University of Toronto, Ontario, Canada, Ph.D.

Research Interests: The historical reception, circulation, and material production of Romantic-era British literature. Also, how digital technologies can foster both research and the presentation of new research in the fields of Book History and Romanticism.



**JACLYN FISCUS**

**ASSISTANT PROFESSOR**

Department of English

Degree Institution: University of Washington, Ph.D.

Research Interests: The productive interstices of composition and linguistics, working toward transformational pedagogical composition practices by investigating how reflection, critical language and genre awareness, multimodality, and transfer can help students and instructors work ethically across difference.



**FRANCES TRAN**

**ASSISTANT PROFESSOR**

Department of English

Degree Institution: The Graduate Center, City University of New York, Ph.D.

Research Interests: Asian-American racial formation in the context of globalization, multiethnic science and speculative fictions, queer temporalities and worldmaking, and the stakes of humanities and aesthetic education in the present. Principally, Asian-American and comparative ethnic literary studies, American cultural studies, critical race studies, queer of color critique, affect and aesthetic theory, and antiracist and feminist pedagogy.



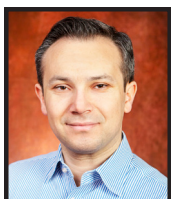
**FENG BAO**

**ASSISTANT PROFESSOR**

Department of Mathematics

Degree Institution: Auburn University, Ph.D.

Research Interests: Computational mathematics and applied probability, mainly analysis and numerical solutions for stochastic (partial) differential equations, data assimilation, uncertainty quantification and stochastic optimization.



**IBRAHIM EKREN**

**ASSISTANT PROFESSOR**

Department of Mathematics

Degree Institution: University of Southern California, Ph.D.

Research Interests: In financial mathematics, interests include equilibrium and asymptotic results for market illiquidity and optimal transport duality. In stochastic analysis, viscosity solutions for non-Markovian stochastic systems, Malliavin calculus, rough paths and invariant measures for dispersive SPDEs.

# NEW FACULTY DIRECTORY 2018-2019

## COLLEGE OF ARTS AND SCIENCES



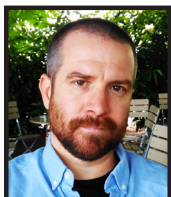
**ASEEL FARHAT**

Department of Mathematics

Degree Institution: University of California–Irvine, Ph.D.

Research Interests: Mathematical analysis of nonlinear partial differential equations arising as models of incompressible fluid in ocean, atmosphere and plasma dynamics.

**ASSISTANT PROFESSOR**



**TYLER FOSTER**

Department of Mathematics

Degree Institution: Yale University, Ph.D.

Research Interests: Algebraic geometry, focusing on problems in non-Archimedean geometry and related combinatorial geometry, and on-point counting on algebraic varieties over finite fields.

**ASSISTANT PROFESSOR**



**ZHIYING QIAN**

Department of Modern Languages and Linguistics

Degree Institution: University of Illinois–Urbana-Champaign, Ph.D.

Research Interests: Cognitive processes underlying second-language acquisition, and sentence processing by native speakers and second language learners of Chinese.

**ASSISTANT PROFESSOR**



**GWIMOOON SEO**

Institute of Molecular Biophysics

Degree Institution: Hanyang University, Seoul, South Korea, Ph.D.

Research Interests: Recombinant protein expression and purification at multiple scales using various host cell expression systems.

**ASSISTANT IN RESEARCH**



**MICHAEL BUKOSKI**

Department of Philosophy

Degree Institution: University of Arizona, Ph.D.

Research Interests: Ethics, metaethics, and political philosophy; current research focuses on the implications of moral uncertainty for moral decision-making and, at a more basic level, on the nature of reasons and morality.

**ASSISTANT PROFESSOR**



**MARCELA HERDOVA**

Department of Philosophy

Degree Institution: King's College, London, Ph.D.

Research Interests: Moral psychology, ethics, neuro-ethics and applied ethics, free will, philosophy of mind, and philosophy of action.

**ASSISTANT PROFESSOR**



**EDWARD HINCHMAN**

Department of Philosophy

Degree Institution: University of Michigan, Ph.D.

Research Interests: The nature of judgment and belief and the nature of intention, extending a longstanding project on the role of trust in epistemic and practical rationality.

**ASSOCIATE PROFESSOR**

# NEW FACULTY DIRECTORY 2018-2019

## COLLEGE OF ARTS AND SCIENCES



**SARAH VINCENT**

TEACHING FACULTY I

Department of Philosophy

Degree Institution: University of Memphis, Ph.D.

Research Interests: Intersections between the philosophy of cognitive science and applied ethics, most especially regarding nonhuman animals and neuro-divergent persons.

Additionally, in the metaphysics of death.



**ANDREA WESTLUND**

ASSOCIATE PROFESSOR

Department of Philosophy

Degree Institution: University of Michigan, Ph.D.

Research Interests: Ethics, moral psychology, and feminist philosophy; with a more recent focus on relational autonomy, authority, and self-regarding attitudes, with current work on a series of papers on narrative, meaning, and the self.



**HITESH CHANGLANI**

ASSISTANT PROFESSOR

Department of Physics

Degree Institution: Cornell University, Ph.D.

Research Interests: The emergent, collective behavior of quantum systems with many interacting particles, employing new analytic and computational approaches based on tensor networks and renormalization.



**KOHSAKU TOBIOKA**

ASSISTANT PROFESSOR

Department of Physics

Degree Institution: University of Tokyo, Japan, Ph.D.

Research Interests: Theoretical particle physics, in particular, trying to understand physics beyond the Standard Model through Higgs Boson, collider phenomenology, dark matter, supersymmetry, inflation, and axion, with recent work in cosmology.



**DAVID BRAITHWAITE**

ASSISTANT PROFESSOR

Department of Psychology

Degree Institution: Indiana University, Ph.D.

Research Interests: How children and adults learn to reason about abstract concepts, especially in mathematics; applications of psychology to improve mathematics education.



**AMY COREN**

TEACHING FACULTY I

Department of Psychology

Degree Institution: University of Texas–Austin, Ph.D. and University of California–Berkeley, J.D.

Research Interests: The intersection of psychology and law, particularly the applications related to judgement, decision-making and forensic psychology. Also, the neurocognitive aspects that underlie our decision-making processes, identity, punishment and judgment in sexual assault, and bullying/victimization.

# NEW FACULTY DIRECTORY 2018-2019

## COLLEGE OF ARTS AND SCIENCES



**ADAM DEWAN**

**ASSISTANT PROFESSOR**

Department of Psychology

Degree Institution: University of Hawaii, Ph.D.

Research Interests: Molecular and cellular basis of sensory perception using a combination of genetic, optogenetic, calcium imaging, and behavioral techniques to explore how olfactory perception is mapped and encoded within the brain.



**XIAOBING ZHANG**

**ASSISTANT PROFESSOR**

Department of Psychology

Degree Institution: University of Science and Technology of China, Ph.D.

Research Interests: Neural circuits for food intake and eating disorders.



**ELIZABETH ANN CECIL**

**ASSISTANT PROFESSOR**

Department of Religion

Degree Institution: Brown University, Ph.D.

Research Interests: History of South and Southeast Asian religions with Sanskrit and Hindi as primary research languages. Exploring the intersections of religion, politics, and place-making with a particular focus on the development of regional devotional movements and the innovations of temple and image-centered religious practices in Early Medieval India.



**ANDREW DURDIN**

**TEACHING FACULTY I**

Department of Religion

Degree Institution: University of Chicago, Ph.D.

Research Interests: Critical theoretical and methodological approaches to the study of religion, particularly as these relate to issues of discourse, power, alterity, and social conflict. Specifically, ancient Roman religion, magic and religion in Western antiquity, and scholarly historiographies of ancient religions.



**HONGYUAN CAO**

**ASSOCIATE PROFESSOR**

Department of Statistics

Degree Institution: University of North Carolina–Chapel Hill, Ph.D.

Research Interests: High dimensional and large-scale statistical analysis, survival analysis, longitudinal data analysis, biostatistics and bioinformatics.



**JUSTIN SHOWS**

**TEACHING FACULTY II**

Department of Statistics

Degree Institution: North Carolina State University, Ph.D.

Research Interests: Quantile-based continuous variable selection methods for censored data.



**CHONG WU**

**ASSISTANT PROFESSOR**

Department of Statistics

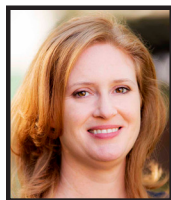
Degree Institution: University of Minnesota, Ph.D.

Research Interests: The long-term goal is to develop new statistical methods and theory for high-dimensional genetic and genomic data, with interests ranging from machine learning to statistical genetics.



# NEW FACULTY DIRECTORY 2018-2019

## COLLEGE OF BUSINESS



**SARAH WITHERS**

Center for Professional Development

Degree Institution: Indiana University, Ph.D.

Research Interests: Twentieth-century American drama, performance studies, and political theories of democracy and inheritance.

**TEACHING FACULTY I**



**ANNE EHINGER**

Department of Accounting

Degree Institution: University of Georgia, Ph.D.

Research Interests: Archival research, with a focus on using tax disclosures to study the interplay between corporate disclosures and the markets' use of information in decision-making.

**ASSISTANT PROFESSOR**



**NATHAN NEWTON**

Department of Accounting

Degree Institution: Texas A&M University, Ph.D.

Research Interests: Audit quality, audit regulation, internal controls, non-audit services, and auditors' effects on financial reporting.

**ASSISTANT PROFESSOR**



**PAUL POLINSKI**

Department of Accounting

Degree Institution: University of Alabama, Ph.D.

Research Interests: Financial reporting and auditing standards, the standard-setting process, audit quality, and other audit market-related issues.

**TEACHING FACULTY I**



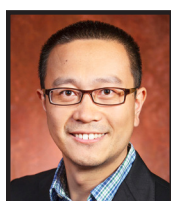
**NATHAN WADLINGER**

Department of Accounting

Degree Institution: University of Florida, J.D.

Research Interests: Corporate taxation, partnership taxation, federal income taxation, federal taxation of business entities, tax practicum, and law and business.

**TEACHING FACULTY I**



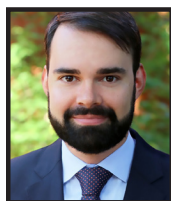
**GUANYI LU**

Department of Business Analytics, Information Systems and Supply Chain

Degree Institution: Texas A&M University, Ph.D.

Research Interests: Supply chain structure and integration, supply chain risk and security, information and communication technology, applied econometrics, and behavioral operations.

**ASSISTANT PROFESSOR**



**FRANCOIS COCQUEMAS**

Department of Finance

Degree Institution: EDHEC Business School, France, Ph.D.

Research Interests: Financial markets, with a focus on options and securities lending.

**ASSISTANT PROFESSOR**



**SERGEY MITYAKOV**

Department of Finance

Degree Institution: University of Chicago, Ph.D.

Research Interests: Corporate governance and banking.

**ASSISTANT PROFESSOR**

# NEW FACULTY DIRECTORY 2018-2019

## COLLEGE OF BUSINESS



**KELSEY SYVRUD**

Department of Finance

Degree Institution: Florida State University, Ph.D.

Research Interests: International corporate finance, politics, law and finance, entrepreneurship, and contract procurement.

**TEACHING FACULTY I**



**SAMANTHA PAUSTIAN-UNDERDAHL**

Department of Management

Degree Institution: University of North Carolina, Ph.D.

Research Interests: Work-life boundaries, gender and diversity in organizations, and supervisor-subordinate relations/leadership.

**ASSISTANT PROFESSOR**



**KEITH FERGUSON**

Department of Marketing

Degree Institution: Kennesaw State University, D.B.A.

Research Interests: Sustainable product purchase behavior, innovation and family business.

**TEACHING FACULTY I**



**JONATHAN JACKSON**

Department of Marketing

Degree Institution: University of South Carolina, M.B.A.

Research Interests: Marketing, social media marketing, and internet research and marketing.

**INSTRUCTIONAL SPECIALIST I**



**MEREDITH THOMAS**

Department of Marketing

Degree Institution: University of Wisconsin–Madison, Ph.D.

Research Interests: Community dynamics related to the consumption of space and place, relationships between urban design and community, consumption inequality, and the social-psychological nature of money.

**ASSISTANT PROFESSOR**



**KYEONGHEE KIM**

Department of Risk Management/Insurance, Real Estate and Legal Studies

Degree Institution: University of Wisconsin–Madison, Ph.D.

Research Interests: Understanding the implications of market imperfections and regulation for financial institutions, with the goal of generating quality research in the economics and finance disciplines by leveraging unique aspects of insurance markets.

**ASSISTANT PROFESSOR**



**TINGYU ZHOU**

Department of Risk Management/Insurance, Real Estate and Legal Studies

Degree Institution: University of Connecticut, Ph.D.

Research Interests: Real estate economics, and commercial real estate.

**ASSISTANT PROFESSOR**



# NEW FACULTY DIRECTORY 2018-2019

## COLLEGE OF COMMUNICATION AND INFORMATION



**RACHEL BAILEY**

School of Communication

Degree Institution: Indiana University, Ph.D.

Research Interests: Symbols and representations of primary appetitive stimuli.

**ASSISTANT PROFESSOR**



**KATHERINE DALE**

School of Communication

Degree Institution: Ohio State University, Ph.D.

Research Interests: Positive media psychology, intergroup interaction, and social media, particularly in how media affect the way we see and experience the world.

**ASSISTANT PROFESSOR**



**ARIENNE FERCHAUD**

School of Communication

Degree Institution: Pennsylvania State University, Ph.D.

Research Interests: Psychological aspects of new entertainment media, exploring the effects of emerging media in entertainment consumption and selection.

**ASSISTANT PROFESSOR**



**CHANTA HAYWOOD**

School of Communication

Degree Institution: University of California–San Diego, Ph.D.

Research Interests: Cross-disciplinary research approaches and strategies to solving complex problems; teaching undergraduate and graduate students how to think, conduct research, and write beyond the box.

**TEACHING FACULTY I**



**AVERY HENRY**

School of Communication

Degree Institution: Wayne State University, Ph.D.

Research Interests: Argumentation and rhetoric.

**TEACHING FACULTY I**



**ANDREA BARTON HULSEY**

School of Communication Science and Disorders

Degree Institution: Georgia State University, Ph.D.

Research Interests: How children with IDD, and in particular children with limited speech ability, develop the linguistic knowledge necessary for reading.

**ASSISTANT PROFESSOR**



**CHRISTOPHER CONSTANTINO**

School of Communication Science and Disorders

Degree Institution: University of Memphis, Ph.D.

Research Interests: Speech-language pathology.

**ASSISTANT PROFESSOR**



**KIMBERLEE CRASS**

School of Communication Science and Disorders

Degree Institution: University of South Carolina, Ph.D.

Research Interests: Listening and spoken language development, aural (re)habilitation, speech perception and cochlear implants, with a clinical specialty in the aural (re)habilitation of children and adults who are deaf or hard of hearing.

**TEACHING FACULTY I**

# NEW FACULTY DIRECTORY 2018-2019

---

## COLLEGE OF COMMUNICATION AND INFORMATION

---



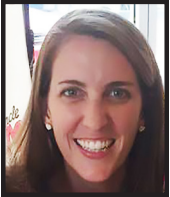
**KELLY FARQUHARSON**

**ASSOCIATE PROFESSOR**

School of Communication Science and Disorders

Degree Institution: University of Nebraska–Lincoln, Ph.D.

Research Interests: Literacy acquisition for children with phonological and language disorders.



**MOLLIE ROMANO**

**ASSISTANT PROFESSOR**

School of Communication Science and Disorders

Degree Institution: Florida State University, Ph.D.

Research Interests: Conducting descriptive studies of typical and atypical prelinguistic development.



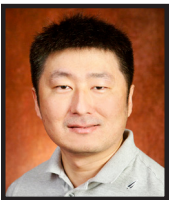
**JUNG HOON BAEG**

**TEACHING FACULTY I**

School of Information

Degree Institution: Florida State University, Ph.D.

Research Interests: Factors influencing the use of the public library for health information.



**YUBO KOU**

**ASSISTANT PROFESSOR**

School of Information

Degree Institution: University of California–Irvine, Ph.D.

Research Interests: Human-computer interaction, computer-supported cooperative work, social computing, social media research, and game research.



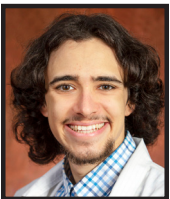
**DIOGO NUNES DE OLIVEIRA**

**ASSISTANT PROFESSOR**

School of Information

Degree Institution: University of Florida, Ph.D.

Research Interests: Cybersecurity and network survivability as well as network performance and communication protocols.



**LUCAS VON HOLLEN**

**TEACHING FACULTY I**

School of Information

Degree Institution: Florida State University, M.S.

Research Interests: Gaming psychology and entertainment interaction.

---

## COLLEGE OF CRIMINOLOGY AND CRIMINAL JUSTICE

---



**JULIE BRANCALE**

**VISITING TEACHING FACULTY I**

Degree Institution: Florida State University, Ph.D.

Research Interests: Correctional policy evaluation, juvenile justice policy evaluation, life course, elder exploitation and victimization, corrections, comparative criminal justice, juvenile justice, and research methods.

# NEW FACULTY DIRECTORY 2018-2019

---

## COLLEGE OF CRIMINOLOGY AND CRIMINAL JUSTICE

---



**YOUNG-AN KIM**

Degree Institution: University of California–Irvine, Ph.D.

Research Interests: Criminology, crime and place, and spatial analysis.

**ASSISTANT PROFESSOR**



**KYLE McLEAN**

Degree Institution: University of South Carolina, Ph.D.

Research Interests: Policing, criminological theory, and social psychology.

**ASSISTANT PROFESSOR**



**STEVEN ZANE**

Degree Institution: Northeastern University, Ph.D.

Research Interests: Criminal law, juvenile justice, juvenile transfer policy, race and justice, and evidence-based social policy.

**ASSISTANT PROFESSOR**

---

## COLLEGE OF EDUCATION

---



**DAMON ANDREW**

Office of the Dean

Degree Institution: Florida State University, Ph.D.

Research Interests: Leadership in sport; the attraction of sport to participants, spectators, sponsors, employees, and stakeholders; and the effective integration of individuals with disabilities into the sporting environment.

**PROFESSOR AND DEAN**



**CAMERON BEATTY**

Department of Educational Leadership and Policy Studies

Degree Institution: Iowa State University, Ph.D.

Research Interests: Higher Education Administration, research includes the intersections of gender and race in leadership education, leadership development of students of color on historically white campuses, and global leadership for undergraduate students.

**ASSISTANT PROFESSOR**



**MARIANNE LORENSEN**

Department of Educational Leadership and Policy Studies

Degree Institution: University of Nebraska–Lincoln, Ph.D.

Research Interests: College student leadership development, leadership in groups and teams, experiential learning and civic engagement.

**TEACHING FACULTY I**



**SALLY WATKINS**

Department of Educational Leadership and Policy Studies

Degree Institution: Florida State University, Ph.D.

Research Interests: Higher education, leadership education, and student affairs.

**TEACHING FACULTY I**

# NEW FACULTY DIRECTORY 2018-2019

## COLLEGE OF EDUCATION



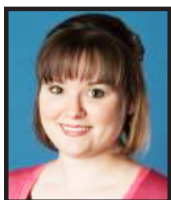
**DAVID ECCLES**

**ASSOCIATE PROFESSOR**

Department of Educational Psychology and Learning Systems

Degree Institution: University of Wales, United Kingdom, Ph.D.

Research Interests: Sport psychology—skilled and expert performance and its development, particularly from a cognitive perspective, in sport and other real-world domains involving performance under stress.



**TRISTEN HYATT**

**TEACHING FACULTY I**

Department of Educational Psychology and Learning Systems

Degree Institution: Auburn University, Ph.D.

Research Interests: Counselor competency to work with specific populations, career counseling, and counselor-in-training self-care.



**V. SIMONE MAY**

**TEACHING FACULTY I**

Department of Educational Psychology and Learning Systems

Degree Institution: Auburn University, Ph.D.

Research Interests: Work with survivors of domestic violence, abuse and sexual assault, military couples and families, and children; minority and underrepresented populations with an emphasis on higher education preparation, success, recruitment and retention.



**VERONICA FLEURY**

**ASSISTANT PROFESSOR**

School of Teacher Education

Degree Institution: University of Washington, Ph.D.

Research Interests: Special education with an emphasis on Autism Spectrum Disorder, early intervention, and evidence-based practices.



**STACEY HARDIN**

**TEACHING FACULTY I**

School of Teacher Education

Degree Institution: University of Central Florida, Ph.D.

Research Interests: Culturally responsive teaching, social justice in education, teacher preparation in special education (specifically self-identity) and awareness of implicit biases, power and privilege; mild to moderate disabilities, specifically students with emotional and behavioral disabilities.



**SHAOFENG LI**

**ASSOCIATE PROFESSOR**

School of Teacher Education

Degree Institution: Michigan State University, Ph.D.

Research Interests: Cognitive abilities for second-language acquisition, task-based language teaching and learning, and research methods.



**KYLEE STUDER O'DANIEL**

**VISITING TEACHING FACULTY I**

Department of Sport Management

Degree Institution: Ohio State University, Ph.D.

Research Interests: Sport ethics, sport history, sport sociology, sport law, cultural studies in sports, sport media, financial management in sport, and research in kinesiology.



# NEW FACULTY DIRECTORY 2018-2019

---

## COLLEGE OF EDUCATION

---



**NICOLE PATTON TERRY**

**PROFESSOR**

FCRR/School of Teacher Education

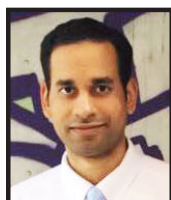
Degree Institution: Northwestern University, Ph.D.

Research Interests: Young children with and without disabilities struggling to acquire language and literacy skills, in particular children from culturally and linguistically diverse backgrounds and children living in poverty.

---

## FAMU-FSU COLLEGE OF ENGINEERING

---



**JAMEL ALI**

**ASSISTANT PROFESSOR**

Department of Chemical and Biomedical Engineering

Degree Institution: Drexel University, Ph.D.

Research Interests: Development of engineered nanobiomaterials for nanoscale actuation and sensing.



**CHRISTINA HOLMES**

**ASSISTANT PROFESSOR**

Department of Chemical and Biomedical Engineering

Degree Institution: McGill University, Montreal, Québec, Canada, Ph.D.

Research Interests: Biomaterials, tissue engineering, regenerative medicine, and nanocarriers for drug and gene delivery.



**SCOTT ROWE**

**TEACHING FACULTY I**

Department of Chemical and Biomedical Engineering

Degree Institution: University of Colorado–Boulder, Ph.D.

Research Interests: Optimization, control, molecular biology, and entrepreneurship.



**JUYEONG CHOI**

**ASSISTANT PROFESSOR**

Department of Civil and Environmental Engineering

Degree Institution: Purdue University, Ph.D.

Research Interests: Capital rehabilitation planning, project management, infrastructure planning for sustainability and resiliency, and operational simulation and analysis.



**SEAN MARTIN**

**TEACHING FACULTY III**

Department of Civil and Environmental Engineering

Degree Institution: Florida State University, M.S.

Research Interests: Professional engineering practice, ethics, structural engineering, wind engineering, wind and renewable energy.



**OLUGBENGA MOSES ANUBI**

**ASSISTANT PROFESSOR**

Department of Electrical and Computer Engineering

Degree Institution: University of Florida, Ph.D.

Research Interests: Resilient, robust and adaptive control systems, vehicle dynamics and control, real-time optimization, and robotics.

# NEW FACULTY DIRECTORY 2018-2019

## FAMU-FSU COLLEGE OF ENGINEERING



**OSCAR CHUY, JR.**

Department of Electrical and Computer Engineering

Degree Institution: Tohoku University, Japan, Ph.D.

Research Interests: Robotics, intelligent systems, and control of assistive devices.

**TEACHING FACULTY I**



**CHARALAMBOS "HARRYS" KONSTANTINOU**

Department of Electrical and Computer Engineering

Degree Institution: New York University, Ph.D.

Research Interests: Cyber-physical systems security and resilience, smart grid, and industrial control systems.

**ASSISTANT PROFESSOR**



**YUAN LI**

Department of Electrical and Computer Engineering

Degree Institution: Wuhan University, China, Ph.D.

Research Interests: Renewable energy conversion technology, power electronics, and solar power forecasting.

**ASSISTANT PROFESSOR**



**JINYEONG MOON**

Department of Electrical and Computer Engineering

Degree Institution: Massachusetts Institute of Technology, Ph.D.

Research Interests: Modeling, design, analysis, and measurement of circuits and systems in the fields of power conversion; energy harvesting; electromagnetics; and renewable energy.

**ASSISTANT PROFESSOR**



**FANG PENG**

**DISTINGUISHED PROFESSOR OF ENGINEERING**

Department of Electrical and Computer Engineering

Degree Institution: Nagaoka University of Technology, Japan, Ph.D.

Research Interests: Power electronics.

**TEACHING FACULTY I**



**BETH GRAY**

Department of Industrial and Manufacturing Engineering

Degree Institution: Ohio State University, M.S.

Research Interests: Industrial engineering senior design projects, ergonomics, work measurement, and quality control.

**ASSISTANT PROFESSOR**



**LICHUN LI**

Department of Industrial and Manufacturing Engineering

Degree Institution: University of Notre Dame, Ph.D.

Research Interests: Cyber-Human-Physical systems and associated security problems.



**YANSHUO SUN**

Department of Industrial and Manufacturing Engineering

Degree Institution: University of Maryland-College Park, Ph.D.

Research Interests: Mathematical programming, transportation system optimization, smart cities, and big data analytics.

**ASSISTANT PROFESSOR**



# NEW FACULTY DIRECTORY 2018-2019

---

## FAMU-FSU COLLEGE OF ENGINEERING

---



**MOHD YOUSUF ALI**

Department of Mechanical Engineering

Degree Institution: Florida State University, Ph.D.

Research Interests: Thermal-fluid sciences, experimental fluid mechanics, and data reduction using modal decomposition techniques.

**TEACHING FACULTY I**



**CHRISTIAN HUBICKI**

Department of Mechanical Engineering

Degree Institution: Oregon State University, Ph.D.

Research Interests: Robotics, bipedal locomotion, optimal control methods, and biomechanical modeling.

**ASSISTANT PROFESSOR**

---

## JIM MORAN SCHOOL OF ENTREPRENEURSHIP

---



**SHELLY GRIFFIN**

Department of Retail Entrepreneurship

Degree Institution: Louisiana State University, M.B.A.

Research Interests: Entrepreneurship, small business, and family business.

**ADJUNCT**



**TARA HACKETT**

Department of Retail Entrepreneurship

Degree Institution: University of Kentucky, M.S.

Research Interests: Curriculum/lab courses focused on product development and sustainability.

**ADJUNCT**



**DOMINICK ARD'IS**

Degree Institution: Florida State University, M.S.

Research Interests: Entrepreneurship and collaboration.

**ADJUNCT**



**CLAIRE DUCHEMIN**

Degree Institution: Florida State University, J.D.

Research Interests: Business law, solo and small firm, and Real Property Probate Trust Law (RPPTL).

**ADJUNCT**



**LUKE KNIGHT**

Degree Institution: Florida State University, M.B.A.

Research Interests: Accounting and finance, risk management, management, and entrepreneurship.

**ADJUNCT**



**THOMAS MCHAFFIE**

Degree Institution: Trinity International University, M.Div.

Research Interests: Commercial entrepreneurship, small business, family business, management, and HR management.

**ADJUNCT**

# NEW FACULTY DIRECTORY 2018-2019

---

## JIM MORAN SCHOOL OF ENTREPRENEURSHIP

---



**SIGNÉ THOMAS**

ADJUNCT

Degree Institution: Florida State University, M.S.

Research Interests: Economic education and financial literacy, entrepreneurship, and economic freedom (development economics).

---

## COLLEGE OF FINE ARTS

---



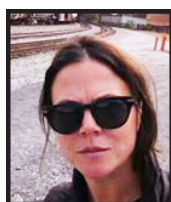
**ELIZABETH DiDONNA**

VISITING TEACHING FACULTY I

Department of Art

Degree Institution: Florida State University, M.F.A.

Research Interests: Exploration into the intersections of personal, cultural, and material memory using site-specific installation, ceramics, performance, and video.



**JESSICA INGRAM**

ASSISTANT PROFESSOR

Department of Art

Degree Institution: California College of the Arts, M.F.A.

Research Interests: Multimedia and the archive to explore the ethos of communities, and notions of progress and resistance in American culture.



**STEPHANIE JAMES**

PROFESSOR AND CHAIR

Department of Art

Degree Institution: University of Newcastle Upon Tyne, England, M.F.A.

Research Interests: Curation and the dynamic between space and the creative process.



**ALLISON SPENCE**

ASSISTANT PROFESSOR

Department of Art

Degree Institution: University of California–San Diego, M.F.A.

Research Interests: Expanded forms of painting, body horror, experimental writing, and interdisciplinary explorations of the intersections of art, culture, and science.



**TENLEY BICK**

ASSISTANT PROFESSOR

Department of Art History

Degree Institution: University of California–Los Angeles, Ph.D.

Research Interests: Modern and global contemporary art, especially post-WWII Europe and contemporary African art, focusing on social art history and cultural geopolitics; the investigation of modern and contemporary art history as a global field; and the examination of art and social context on a local and global level.



**CALEB MITCHELL**

ASSISTANT PROFESSOR

School of Dance

Degree Institution: University of California–Irvine, M.F.A.

Research Interests: Choreography and dance, with the hope in being instrumental in designing courses that would continue the legacy of neoclassic/post-neoclassic ballet in a University setting.

# NEW FACULTY DIRECTORY 2018-2019

## COLLEGE OF FINE ARTS



**YELENA MCLANE**

**ASSISTANT PROFESSOR**

Department of Interior Architecture and Design

Degree Institution: Florida State University, Ph.D.

Research Interests: The design of educational and didactic spaces, with a particular interest in how interior design and architecture facilitate movement through space, literal and figural accessibility, and serendipitous encounters, leading to more transformative learning experiences.



**AMY O'KEEFE**

**FACULTY ADMINISTRATOR**

Department of Interior Architecture and Design

Degree Institution: Florida State University, M.S.

Research Interests: Interior design.



**STEPHANIE SICKLER**

**ASSISTANT PROFESSOR**

Department of Interior Architecture and Design

Degree Institution: Florida State University, M.F.A.

Research Interests: Student and community housing, design pedagogy, and soft goods specifications for interiors, along with foundations and residential design courses.



**PRESTON MCLANE**

**DIRECTOR AND FACULTY ADMINISTRATOR**

Museum of Fine Arts

Degree Institution: Florida State University, Ph.D. and J.D.

Research Interests: Artistic adaptations of the picaresque literary genre; fictitiousness in early modern and contemporary art; nineteenth- and twentieth-century Russian and Soviet art; art and authoritarianism; environmental art; and the application of property theory to cultural resources and heritage sites.



**ROSARIO "CHARI" ARESPOCHAGA**

**ASSISTANT PROFESSOR**

School of Theatre

Degree Institution: University of Victoria, British Columbia, Canada, M.F.A.

Research Interests: Creating theatre more responsive to the community; experimenting with new stories and how we tell them, consciously committing to making space for performers of diverse backgrounds, gender identities, ethnicities and abilities; and devising actor training processes of skill-building as a journey toward holistic artistic formation—i.e., exist as agents of creation and change for the society that we live in.



**JENNIFER RIKER**

**TEACHING FACULTY I**

School of Theatre

Degree Institution: Yale University, M.F.A.

Research Interests: The creative process is rooted in research of the ever-changing environment and its impact on the human condition, which provides a foundation for embodiment of the human aspects of the characters performed.



**AARON THOMAS**

**ASSISTANT PROFESSOR**

School of Theatre

Degree Institution: Florida State University, Ph.D.

Research Interests: Sexuality, gender, and violence, with a focus on masculinity and sexual violence in theatre and film.

# NEW FACULTY DIRECTORY 2018-2019

---

## DEDMAN SCHOOL OF HOSPITALITY

---



**TARIK DOGRU**

**ASSISTANT PROFESSOR**

Degree Institution: University of South Carolina, Ph.D.

Research Interests: Hospitality accounting and finance, corporate finance, investment, mergers and acquisitions, corporate governance, franchising, sharing economy, tourism economics, climate change, and blockchain technology.

---

## COLLEGE OF HUMAN SCIENCES

---



**HEIDI GAZELLE**

**ASSOCIATE PROFESSOR**

Department of Family and Child Sciences

Degree Institution: University of Illinois–Urbana-Champaign, Ph.D.

Research Interests: Interpersonal and emotional development in early and middle childhood, adolescence, and emerging adulthood—specializing in interpersonal mechanisms involved in risk and resilience and longitudinal studies of youth development.



**MICHELE PARKER**

**ASSISTANT PROFESSOR**

Department of Family and Child Sciences

Degree Institution: University of Georgia, Ph.D.

Research Interests: Clinical effectiveness of couple and family therapy in the treatment of Autism Spectrum Disorder, and clinical supervision and therapist development.



**QIONG "JOANNA" WU**

**ASSISTANT PROFESSOR**

Department of Family and Child Sciences

Degree Institution: Ohio State University, Ph.D.

Research Interests: Emotional processes within the family and their role in the intergenerational transmission of psychopathologies from parents to children, and examining the efficacy of family therapy interventions aimed at improving parent-child emotional interactions.



**AMY ASHMORE**

**TEACHING FACULTY I**

Department of Nutrition, Food and Exercise Sciences

Degree Institution: University of Texas–Austin, Ph.D.

Research Interests: Resistance training methods for strength and power development.



**CLAIRE BERRYMAN**

**ASSISTANT PROFESSOR**

Department of Nutrition, Food and Exercise Sciences

Degree Institution: Pennsylvania State University, Ph.D.

Research Interests: Physiological and metabolic adaptations to macronutrient manipulation, caloric restriction, and environmental stress.



**PAYAL GHOSH**

**TEACHING FACULTY I**

Department of Nutrition, Food and Exercise Sciences

Degree Institution: University of Florida, Ph.D.

Research Interests: Microvascular physiology, namely the effects of the space environment on arterial function, and also strength and conditioning.



# NEW FACULTY DIRECTORY 2018-2019

---

## COLLEGE OF HUMAN SCIENCES

---



**STEPHEN HENNIGAR**

**ASSISTANT PROFESSOR**

Department of Nutrition, Food and Exercise Sciences

Degree Institution: Pennsylvania State University, Ph.D.

Research Interests: Physiological factors that regulate vitamin and mineral absorption and status.



**PANAGIOTIS KOUTAKIS**

**ASSISTANT PROFESSOR**

Department of Nutrition, Food and Exercise Sciences

Degree Institution: University of Nebraska–Medical Center, Ph.D.

Research Interests: Investigating the effect of antioxidant treatment in patients with Peripheral Artery Disease.



**JUSTIN LA FAVOR**

**ASSISTANT PROFESSOR**

Department of Nutrition, Food and Exercise Sciences

Degree Institution: East Carolina University, Ph.D.

Research Interests: Role of free radical signaling in diet-induced erectile dysfunction and vascular physiology.



**MICHELLE PARVATIYAR**

**ASSISTANT PROFESSOR**

Department of Nutrition, Food and Exercise Sciences

Degree Institution: University of Miami, Ph.D.

Research Interests: The development of therapeutic interventions to improve systolic function in dilated cardiomyopathies and other conditions culminating in heart failure.



**JENNIFER STEINER**

**ASSISTANT PROFESSOR**

Department of Nutrition, Food and Exercise Sciences

Degree Institution: University of South Carolina, Ph.D.

Research Interests: Investigation of the effects of exercise and nutrition on physiology during health and disease.

---

## COLLEGE OF LAW

---



**DARBY KERRIGAN SCOTT**

**VISITING TEACHING FACULTY I**

Degree Institution: Florida State University, J.D.

Research Interests: Directing the Immigration/ Agricultural Workers project within the Public Interest Law Center, along with community outreach and legal reform activities, including legislative advocacy, focusing on eliminating economic barriers for immigrants and farmworkers.



**CARLA LAROCHE**

**TEACHING FACULTY III**

Degree Institution: Columbia Law School, J.D.

Research Interests: Criminal justice, gender law, and family law and policy.

# NEW FACULTY DIRECTORY 2018-2019

---

## COLLEGE OF LAW

---



**MICHAEL MORLEY**

**ASSISTANT PROFESSOR**

Degree Institution: Yale Law School, J.D.

Research Interests: Election law, federal courts, remedies, legislation and regulation, and constitutional theory and interpretation.



**MARIBEL ROIG**

**ASSISTANT DEAN AND FACULTY ADMINISTRATOR**

Degree Institution: Harvard University, Ph.D.

Research Interests: Directs and manages activities related to improving the academic success of College of Law students, and coordinates academic program oversight, registrar and academic advising efforts, as well as strategic initiatives for new programs.



**PHIL SANDON**

**TEACHING FACULTY I**

Degree Institution: Florida State University, J.D.

Research Interests: Florida practice, Florida constitutional law, and remedies.



**SARAH SWAN**

**ASSISTANT PROFESSOR**

Degree Institution: Columbia Law School, J.S.D.

Research Interests: Torts, property law, family law, local government law, and criminal law.



**GLENDATHORNTON FACULTY ADMINISTRATOR AND ASSISTANT DEAN, STRATEGIC INITIATIVES**

Degree Institution: Florida State University, J.D.

Research Interests: Directing special projects related to advancing the core mission and future direction of the College of Law, advising the Dean on current trends in the legal profession, and performing a wide range of complex executive and administrative duties to enhance the image of the College and to cultivate financial support and community engagement.

---

## COLLEGE OF MEDICINE

---



**TIA WALTON-WALKER**

**RESEARCH FACULTY I**

Autism Institute

Degree Institution: Michigan State University, Ph.D.

Research Interests: Identifying the early signs of autism in infants and toddlers in low-income, rural and ethnic minority communities.



**SAMANTHA GOLDFARB**

**CLINICAL ASSISTANT PROFESSOR**

Department of Behavioral Sciences and Social Medicine

Degree Institution: University of Alabama, Dr.P.H.

Research Interests: Understanding the impact of state health and drug policies on maternal and perinatal populations, and seeking to understand how drug policies criminalizing substance use in pregnancy subsequently impact maternal and infant outcomes.



# NEW FACULTY DIRECTORY 2018-2019

## COLLEGE OF MEDICINE



**YOLANY HYDE**

**ASSISTANT PROFESSOR**

Department of Behavioral Sciences and Social Medicine  
Degree Institution: University of Oklahoma, Ph.D.  
Research Interests: Hispanic literature, language, and culture.



**TYRA DARK**

**ASSISTANT PROFESSOR**

Department of Behavioral Sciences and Social Medicine  
Degree Institution: University of South Florida, Ph.D.  
Research Interests: Social epidemiology, specifically in the comorbidity of mental illness and cardiometabolic syndrome, identifying the unique health care needs of this population, and the role of race/ethnicity on delivery of care.



**SCOTT PICKETT**

**ASSOCIATE PROFESSOR**

Department of Behavioral Sciences and Social Medicine  
Degree Institution: Northern Illinois University, Ph.D.  
Research Interests: Relationships between sleep disruption and emotional and behavioral health, specifically examining these relationships subsequent to psychological trauma exposure.



**JULIA SHEFFLER**

**RESEARCH FACULTY I**

Department of Behavioral Sciences and Social Medicine  
Degree Institution: Florida State University, Ph.D.  
Research Interests: Identification of risk factors (e.g., adverse childhood experiences and late-life stress) for mid- to late-life health conditions to clarification of how protective factors (e.g., coping, personal beliefs, social network) may attenuate the effects of such risk factors, and also understanding how these risks and resiliency factors influence health using a biopsychosocial lens and collaboration across disciplines to develop comprehensive interventions.



**ZUCAI SUO**

**PROFESSOR**

Department of Biomedical Sciences  
Degree Institution: Pennsylvania State University, Ph.D.  
Research Interests: A variety of multi-disciplinary techniques to investigate intriguing questions in enzymology and to pursue rational drug design.



**MARY NORTON**

**CLINICAL ASSISTANT PROFESSOR**

Department of Clinical Sciences  
Degree Institution: Florida State University, M.D.  
Research Interests: Community pediatrics, trauma-informed care, patient advocacy, integrated primary care and behavioral health, the mother-baby dyad, breastfeeding, human trafficking and global health.



**KEMA GADSON**

**CLINICAL ASSISTANT PROFESSOR**

Division of Student Affairs–College of Medicine  
Degree Institution: Florida State University, Ed.D.  
Research Interests: Students in transition, medical student educational development, student leadership, and diversity and inclusion.

# NEW FACULTY DIRECTORY 2018-2019

## COLLEGE OF MEDICINE



**SHERMEEKA HOGANS-MATHEWS**

**CLINICAL ASSISTANT PROFESSOR**

Department of Family Medicine and Rural Health

Degree Institution: Florida State University, M.D.

Research Interests: Primary care behavioral health, and perinatal mood disorders.



**COLM CONNOLLY**

**ASSISTANT IN RESEARCH**

Functional MRI

Degree Institution: University College of Dublin, Ireland, Ph.D.

Research Interests: Magnetic resonance imaging, mood disorders and adolescent mental health.



**MRIDUL MAZUMDER**

**CLINICAL ASSISTANT PROFESSOR**

Department of Geriatric Medicine

Degree Institution: University of Arkansas, M.D.

Research Interests: Medical education, geriatrics, personality disorders, and ECT.



**JAMIE FAIRCLOUGH**

**RESEARCH FACULTY I**

Interdisciplinary Medical Sciences Program

Degree Institution: Florida State University, Ph.D.

Research Interests: Population health, data analytics, and health economics.



**ALFRED GITU**

**CLINICAL ASSOCIATE PROFESSOR**

Lee Memorial Hospital System (LMHS, Fort Myers) Family Medicine Residency Program

Degree Institution: University of Nairobi School of Medicine, MBChB.

Research Interests: Family medicine, primary care, and lifestyle medicine.



**SANDEEP RAHANGDALE**

**CLINICAL ASSOCIATE PROFESSOR**

Tallahassee Regional Medical School Campus

Degree Institution: University of North Carolina–Chapel Hill, M.D.

Research Interests: Internal medicine, preventive medicine and cardiology.



**CLAUDIA KROKER-BODE**

**CLINICAL PROFESSOR**

Tallahassee Memorial Healthcare (TMH) Internal Medicine Residency Program

Degree Institution: Westfälische Wilhelms Universität Münster, Germany, M.D.

Research Interests: Quality improvement, patient safety, and minority fair treatment and representation.

# NEW FACULTY DIRECTORY 2018-2019

---

## COLLEGE OF MOTION PICTURE ARTS

---



**DUSTIN CAWOOD**

Degree Institution: Florida State University, M.F.A.

Research Interests: Sound design and sound editing for motion pictures.

TEACHING FACULTY I



**MARISOL GOMEZ-MOUAKAD**

Degree Institution: The New School University–New York, M.A.

Research Interests: Film production, screenwriting, feminist film theory and diversity in film.

TEACHING FACULTY I



**GREG MARCKS**

Degree Institution: Florida State University, M.F.A.

Research Interests: Aesthetics and interdisciplinary aspects of motion picture production; and classic, independent, and world cinema.

TEACHING FACULTY I



**MARK VARGO**

Degree Institution: Montana State University, B.S.

Research Interests: Cinematography for motion pictures, and a high energy, immersive learning environment that mirrors the way big time movies are made on the next level.

TEACHING FACULTY I

---

## COLLEGE OF MUSIC

---



**GRADY ENLOW**

Degree Institution: Florida State University, Ed.D.

Research Interests: Engagement and entrepreneurship, and leadership development.

VISITING ASSOCIATE PROFESSOR AND ASSOCIATE DEAN



**KAREN LARGE**

Flute

Degree Institution: Florida State University, D.M.A.

Research Interests: The intersection of music theory and performance, Baroque flute performance practice, and Romantic flute transcriptions.

ASSISTANT PROFESSOR



**D. GREGORY SPRINGER**

Music Education

Degree Institution: University of Kentucky, Ph.D.

Research Interests: The perception and cognition of music, music performance evaluation, and music teacher education.

ASSISTANT PROFESSOR



**STEPHEN MONTAGUE**

Music Theory / Composition

Degree Institution: Ohio State University, D.M.A.

Research Interests: Music composition.

VISITING PROFESSOR

# NEW FACULTY DIRECTORY 2018-2019

---

## COLLEGE OF MUSIC

---



**GEOFFREY DEIBEL**

Saxophone

Degree Institution: Michigan State University, D.M.A.

Research Interests: Contemporary music—saxophone and computer collaboration, live processing, and spatialization.

**ASSISTANT PROFESSOR**



**JEFFREY SPRINGER**

Voice

Degree Institution: The Catholic University of America, D.M.A.

Research Interests: Voice performance.

**ASSISTANT PROFESSOR**

---

## COLLEGE OF NURSING

---



**JESSICA BAHORSKI**

Degree Institution: University of Alabama–Birmingham, Ph.D.

Research Interests: Parental self-efficacy, feeding practices, and weight in infancy: A secondary analysis; intergenerational transmission of obesity in a cohort of mother-offspring dyads; and enhanced body composition and infant feeding analysis.

**VISITING ASSISTANT PROFESSOR**

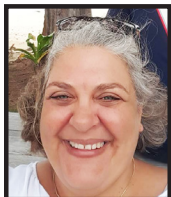


**SUSAN BAKER**

Degree Institution: University of South Florida, Ph.D.

Research Interests: Health disparities and cancer screening behaviors among African Americans.

**TEACHING FACULTY III**



**LAUREN CAMPBELL**

Degree Institution: Samford University, D.N.P.

Research Interests: Nursing education and retention of professional nurses.

**TEACHING FACULTY II**



**KATHRYN KEANE**

Degree Institution: Florida State University, M.S.N.

Research Interests: Obstetrics.

**TEACHING FACULTY I**



**GRAHAM McDOUGALL**

Degree Institution: University of Texas–Austin, Ph.D.

Research Interests: Cognitive aging and the modification of risk factors through health promotion interventions aimed at improving both subjective and objective memory performance and functional ability.

**PROFESSOR**



# NEW FACULTY DIRECTORY 2018-2019

## COLLEGE OF NURSING



**MIA NEWLIN**

Degree Institution: Florida State University, Ph.D.

Research Interests: Nursing for populations with cardiovascular issues and the importance of lifestyle medicine for primary and secondary prevention.

TEACHING FACULTY II



**GENEVA SCOTT-KING**

Degree Institution: University of Alabama–Birmingham, D.N.P.

Research Interests: DNP research project, and community based assessment of cardiometabolic risk.

TEACHING FACULTY II



**STACY WHEELER**

Degree Institution: Valdosta State University, M.S.N.

Research Interests: Medical/surgical nursing.

TEACHING FACULTY I



**FRANKIE WONG**

Degree Institution: Texas A&M University, Ph.D.

Research Interests: Domestic and international socio-epidemiological research on sexual health and sexually transmitted infections among marginalized populations.

PROFESSOR

## COLLEGE OF SOCIAL SCIENCES AND PUBLIC POLICY



**CARRIE LEE**

Department of Economics

Degree Institution: West Virginia University, Ph.D.

Research Interests: Principles of microeconomics, principles of macroeconomics, intermediate price theory, economic development, and money and capital markets.

TEACHING FACULTY II



**AMID MOTAVALLIZADEH ARDAKANI**

Department of Economics

Degree Institution: University of Wisconsin–Milwaukee, Ph.D.

Research Interests: Macroeconomics, growth, development economics, international finance, applied economics, and monetary economics.

TEACHING FACULTY I



**FAN “CYNTHIA” YANG**

Department of Economics

Degree Institution: University of Southern California, Ph.D.

Research Interests: Econometrics, macroeconomics, financial economics, urban and regional economics, and networks.

ASSISTANT PROFESSOR

# NEW FACULTY DIRECTORY 2018-2019

## COLLEGE OF SOCIAL SCIENCES AND PUBLIC POLICY



**MABEL GERGAN**

Department of Geography

Degree Institution: University of North Carolina, Ph.D.

Research Interests: The relationship between the Indian state and its Himalayan borderlands.

**ASSISTANT PROFESSOR**



**SANDY WONG**

Department of Geography

Degree Institution: University of Illinois–Urbana-Champaign, Ph.D.

Research Interests: Health inequalities, social processes of disablement and mobility, environmental influences on health, mixed quantitative and qualitative methods, and health GIS.

**ASSISTANT PROFESSOR**



**ALEXANDRA COCKERHAM**

Department of Interdisciplinary Social Sciences

Degree Institution: Florida State University, Ph.D.

Research Interests: Executives' use of unilateral action and policy-making, and political elections.

**TEACHING FACULTY I**



**RADHA MODI**

Department of Interdisciplinary Social Sciences

Degree Institution: University of Pennsylvania, Ph.D.

Research Interests: South Asian studies, racialization, immigrant experience, and gender issues.

**TEACHING FACULTY I**



**RAPHAEL CUNHA**

Department of Political Science

Degree Institution: Ohio State University, Ph.D.

Research Interests: International political economy, international finance, and developing countries.

**ASSISTANT PROFESSOR**



**MARINA DUQUE**

Department of Political Science

Degree Institution: Ohio State University, Ph.D.

Research Interests: How countries achieve status (or prestige) in international politics, and combining social theory and network analysis.

**ASSISTANT PROFESSOR**



**JAMES WRIGHT, II**

Askew School of Public Administration and Policy

Degree Institution: American University, Ph.D.

Research Interests: How policing practices influence policy outcomes in communities of color, and how public administrators make policy decisions.

**ASSISTANT PROFESSOR**



**MATTHEW HAUER**

Department of Sociology

Degree Institution: University of Georgia, Ph.D.

Research Interests: The demographic impacts of climate change, sea level rise-induced human migration, and reductions in life expectancy due to climate change.

**ASSISTANT PROFESSOR**

# NEW FACULTY DIRECTORY 2018-2019

---

## COLLEGE OF SOCIAL SCIENCES AND PUBLIC POLICY

---



**PATRICIA HOMAN**

Department of Sociology

Degree Institution: Duke University, Ph.D.

Research Interests: Medical sociology, population health, gender, stratification/inequality, life course and aging, demography and quantitative methods.

**ASSISTANT PROFESSOR**



**TERESA ROACH**

Department of Sociology

Degree Institution: Florida State University, Ph.D.

Research Interests: Gender, sexuality, families and intimate relationships, and qualitative methods.

**TEACHING FACULTY I**



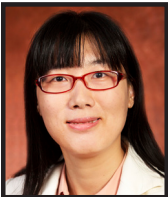
**SOURABH SINGH**

Department of Sociology

Degree Institution: Rutgers University, Ph.D.

Research Interests: Political sociology, sociological theories, comparative and historical sociology, culture, and South Asian politics.

**ASSISTANT PROFESSOR**



**LI FANG**

Department of Urban and Regional Planning

Degree Institution: University of Maryland, Ph.D.

Research Interests: Economic development, land use, and sustainability.

**ASSISTANT PROFESSOR**



**MINJEE KIM**

Department of Urban and Regional Planning

Degree Institution: Massachusetts Institute of Technology (MIT), Ph.D.

Research Interests: Land use and real estate.

**ASSISTANT PROFESSOR**

---

## COLLEGE OF SOCIAL WORK

---



**REBECCA DERRENBERGER**

Degree Institution: Florida State University, M.S.W.

Research Interests: Social work practices.

**ADJUNCT**



**SHALAY JACKSON**

Degree Institution: University of South Florida, Ph.D.

Research Interests: Macro-level social work and school social work practice with an emphasis on community, policy, prevention, resilience, and positive youth development.

**TEACHING FACULTY I**



**MICHAEL KILLIAN**

Degree Institution: Florida State University, Ph.D.

Research Interests: Pediatric health and psychosocial determinants of health, medication adherence, advanced statistical methods, psychometrics and measurement.

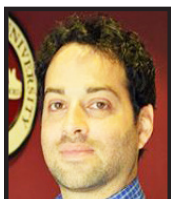
**ASSISTANT PROFESSOR**

# NEW FACULTY DIRECTORY 2018-2019

---

## COLLEGE OF SOCIAL WORK

---



**YAACOV PETSCHER**

**ASSOCIATE PROFESSOR**

Degree Institution: Florida State University, Ph.D.

Research Interests: The study of individual differences in the development of literacy skills, psychometric and statistical modeling, and developing tools for data visualization and use.



**CARRIE PETTUS DAVIS**

**ASSOCIATE PROFESSOR**

Degree Institution: University of North Carolina–Chapel Hill, Ph.D.

Research Interests: Intervention research on well-being development and behavioral health for criminal justice-involved adults, sustainable and effective decarceration (smart decarceration), and trauma and social support among criminal justice-involved adults.



**TANYA RENN**

**ASSISTANT PROFESSOR**

Degree Institution: University of Louisville, Ph.D.

Research Interests: Intervention research using innovative methodologies to understand the relationship between chronic stress, substance use, and other risk behaviors among criminal justice-involved adults to promote the well-being of individuals and communities.



**ANNA YELICK**

**ADJUNCT**

Degree Institution: Florida State University, Ph.D.

Research Interests: Decision-making within the child welfare field, statistics, research methods, and diversity and social justice.

---

## DIVISION OF UNDERGRADUATE STUDIES

---



**MARISA AGAMA**

**INSTRUCTIONAL SPECIALIST I**

Academic Center for Excellence (ACE)

Degree Institution: Florida State University, Ph.D.

Research Interests: Supplemental instruction (SI) pedagogy, and teaching diverse populations (research and practical methods).



**KIMBERLY BURGESS**

**TEACHING FACULTY I**

Academic Center for Excellence (ACE)

Degree Institution: Florida State University, Ph.D.

Research Interests: Race and gender in online learning, teaching in adult basic education, and persistence of nontraditional students in higher education.



**ANDREW DENTZAU**

**VISITING TEACHING FACULTY I**

Academic Center for Excellence (ACE)

Degree Institution: Florida State University, M.S.

Research Interests: Student motivation, self-regulated learning, and bipolar disorder in the college student population.



# NEW FACULTY DIRECTORY 2018-2019

---

## DIVISION OF UNDERGRADUATE STUDIES

---



**SAMANTHA NIX**

**INSTRUCTIONAL SPECIALIST I**

Academic Center for Excellence (ACE)

Degree Institution: Florida State University, Ph.D.

Research Interests: College student success or retention initiatives, especially as they relate to helping undergraduates experiencing academic difficulty and motivation or emotion issues, and supporting diversity in science, technology, engineering, and mathematics (STEM) fields.



**AZAT GUNDOGAN**

**TEACHING FACULTY I**

Honors Program

Degree Institution: Binghamton University, Ph.D.

Research Interests: Sociology of built environment, neoliberal urban governance in the Global South, urban renewal projects in low income neighborhoods, and community struggles for the right to the city.



**ROSS MORET**

**TEACHING FACULTY I**

Honors Program

Degree Institution: Florida State University, Ph.D.

Research Interests: Religious ethics, focusing on Islam and Christianity.



**CHRISTINA OWENS**

**TEACHING FACULTY I**

Honors Program

Degree Institution: University of California, Ph.D.

Research Interests: Transnational American studies, feminist and queer cultural studies, postcolonial and critical race theory, and U.S.–Japan relations.

---

## LEARNING SYSTEMS INSTITUTE (LSI)

---



**KELLY CLAUDE**

**ASSISTANT IN RESEARCH**

Degree Institution: University of Alabama, M.A.

Research Interests: Development of content and training to support inclusion of students with disabilities in regular education classrooms with non-disabled peers.



**JASHEENA EKHATOR**

**ASSISTANT IN RESEARCH**

Degree Institution: Barry University, M.S.

Research Interests: Collaborate with all districts and schools to provide customized services and supports, ensuring all students with disabilities have the same educational, social, and future opportunities as their peers.

---

## NATIONAL HIGH MAGNETIC FIELD LABORATORY (MAG LAB)

---



**ALIMAMY BANGURA**

**RESEARCH FACULTY II**

Degree Institution: University of Oxford, England, Ph.D.

Research Interests: Experimental study of strongly correlated electron systems.

# NEW FACULTY DIRECTORY 2018-2019

---

## NATIONAL HIGH MAGNETIC FIELD LABORATORY (MAG LAB)

---



**NAJIB CHEGGOUR**

**RESEARCH FACULTY II**

Degree Institution: Paul Sabatier University, France, Ph.D.

Research Interests: Electromechanical properties of low- and high-temperature superconductors, of interest to communities developing high-energy-physics particle accelerators, electromagnets, fusion-energy reactors, and medical imaging technologies; causality between strain behavior, microstructural properties, and processing of superconductors; electric transport and flux-pinning properties; and metrology development for superconductor characterization.



**THIERRY DUBROCA**

**VISITING RESEARCH FACULTY**

Degree Institution: University of Florida, Ph.D.

Research Interests: Magnetic resonance (applied physics and chemistry).

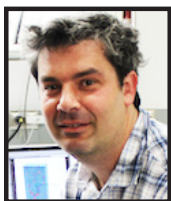


**JENS ROSENBERG**

**RESEARCH FACULTY I**

Degree Institution: Florida State University, Ph.D.

Research Interests: High-field MRI of biomedical systems.



**ARKADY SHEHTER**

**RESEARCH FACULTY I**

Degree Institution: Weizmann Institute of Science, Israel, Ph.D.

Research Interests: Physics in high-temperature superconductors.

---

## OFFICE OF THE PROVOST

---



**JARRETT TERRY**

**FACULTY ADMINISTRATOR AND ASSISTANT PROVOST**

Degree Institution: University of Georgia, Ed.D.

Research Interests: Economic and community engagement, and student success through extracurricular activity.

---

## UNIVERSITY LIBRARIES

---



**VALERIE BOULOS**

**ASSOCIATE UNIVERSITY LIBRARIAN AND ASSOCIATE DEAN**

Collection Development

Degree Institution: Louisiana State University, M.L.I.S.

Research Interests: Library collections and electronic resource access.

# NEW FACULTY DIRECTORY 2018-2019

## UNIVERSITY LIBRARIES



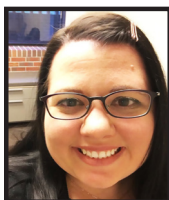
**SHELLY SCHMUCKER** ASSISTANT UNIVERSITY LIBRARIAN AND E-RESOURCES LIBRARIAN  
Collection Development  
Degree Institution: Florida State University, M.L.I.S.  
Research Interests: Electronic resources in libraries.



**ADAM BEAUCHAMP** ASSISTANT UNIVERSITY LIBRARIAN AND HUMANITIES LIBRARIAN  
Research and Learning–Graduate Services  
Degree Institution: Louisiana State University, M.L.I.S.  
Research Interests: Information literacy instruction in disciplinary contexts, assessment in libraries, and the application of science and technology studies to teaching information skills and research methods.



**NICHOLAS RUHS** ASSISTANT UNIVERSITY LIBRARIAN AND  
STEM RESEARCH AND LEARNING LIBRARIAN  
Research and Learning–STEM Services, Dirac Library  
Degree Institution: Washington University–St. Louis, Ph.D.  
Research Interests: Research data management, open science, data services, and information literacy.



**DENISE WETZEL** ASSISTANT UNIVERSITY LIBRARIAN AND  
STEM RESEARCH AND LEARNING LIBRARIAN  
Research and Learning–STEM Services, Dirac Library  
Degree Institution: University of Alabama, M.L.I.S.  
Research Interests: Undergraduate information literacy, terminology usage disparities by researchers across STEM disciplines, and meteorology resources and their use.



**HANNAH DAVIS** ASSISTANT UNIVERSITY LIBRARIAN AND PRESERVATION LIBRARIAN  
Special Collections and Archives  
Degree Institution: Florida State University, M.L.I.S.  
Research Interests: Preservation of archival materials.



**RACHEL DUKE** ASSISTANT UNIVERSITY LIBRARIAN AND RARE BOOKS LIBRARIAN  
Special Collections and Archives  
Degree Institution: Rutgers University–Newark, M.A.  
Research Interests: Women’s communities, medieval women, and convent culture.



**MARK LOPEZ** ASSISTANT UNIVERSITY LIBRARIAN AND METADATA ANALYST  
Special Collections and Archives  
Degree Institution: Florida State University, M.L.I.S.  
Research Interests: Library technical services as a public service, metadata management and transformation, resource discoverability, electronic resource collection management, linked data technologies, and diversity and representation in libraries and academic institutions.

# NEW FACULTY DIRECTORY 2018-2019

## UNIVERSITY LIBRARIES



**KEILA ZAYAS RUIZ**

**ASSISTANT UNIVERSITY LIBRARIAN AND  
SUNSHINE STATE DIGITAL NETWORK COORDINATOR**

Special Collections and Archives

Degree Institution: Florida State University, M.L.I.S.

Research Interests: Online accessibility, intellectual freedom, digital preservation, open access, open source repository software, digital repositories, digital cultural heritage, digitization, and diversity in LIS.



**THERESA ARIAS**

**ASSISTANT UNIVERSITY LIBRARIAN**

University Libraries

Degree Institution: University of Washington, M.L.I.S.

Research Interests: Information literacy, especially in underserved populations, and diversity and inclusion in collection development in archives and academic libraries.



**MICHAEL MOHKAMKAR**

**ASSISTANT UNIVERSITY LIBRARIAN**

University Libraries

Degree Institution: University of North Texas, M.A/M.S.

Research Interests: Computer and data science in libraries.



**MALLARY RAWLS**

**ASSISTANT UNIVERSITY LIBRARIAN**

University Libraries

Degree Institution: Florida State University, M.L.I.S.

Research Interests: Instruction on information literacy and using critical theory to help diversity and inclusion in the academic library and beyond.



**DAVID RODRIGUEZ**

**ASSISTANT UNIVERSITY LIBRARIAN**

University Libraries

Degree Institution: Florida State University, M.L.I.S.

Research Interests: Time-based media preservation/exhibition, audio-visual technology, media archaeology, digital stewardship, and experimental film/video/music.

## IMPORTANT CONTACT INFORMATION

HR Benefits Office	<a href="http://www.hr.fsu.edu">www.hr.fsu.edu</a>	644-4015
Last name A–G — Donna Grubb		644-9615
Last name H–O — Kathy Worthman		644-8732
Last name P–Z — Kendrick Scott		644-5726
HR Retirement Office	<a href="http://hr.fsu.edu">hr.fsu.edu</a>	644-4015
Office of Faculty Development and Advancement	<a href="http://fda.fsu.edu">fda.fsu.edu</a>	644-6876
CANVAS	<a href="http://campus.fsu.edu">campus.fsu.edu</a>	644-4357
myFSU Portal Help Desk	<a href="mailto:help@campus.fsu.edu">help@campus.fsu.edu</a> or	644-4357
Transportation and Parking Services	<a href="http://servicecenter.fsu.edu">servicecenter.fsu.edu</a>	644-HELP
FSU Card Center	<a href="http://transportation.fsu.edu">transportation.fsu.edu</a>	644-5278
Directory Assistance (on-campus)	<a href="http://fsucard.fsu.edu">fsucard.fsu.edu</a>	644-7777
Emergency Information (as needed)	<a href="http://www.fsu.edu/directory">www.fsu.edu/directory</a>	644-2525
	<a href="http://alerts.fsu.edu">alerts.fsu.edu</a>	644-INFO (4636)

### FSU Police Emergency — 911

FSU Police Non-Emergency		644-1234
Employee Assistance Program (EAP)	<a href="http://eap.fsu.edu">eap.fsu.edu</a>	644-2288
Report Student Issue	<a href="http://report.fsu.edu">report.fsu.edu</a>	

#### FDA Twitter:

FSU Faculty Development  
[@FSUFacultyAward](https://twitter.com/FSUFacultyAward) and [#FSUFaculty](https://twitter.com/FSUFaculty)

#### FDA Facebook:

FSU Faculty Development

#### FDA Blog:

<https://fsufacultydevelopment.wordpress.com/blog/>

#### FDA Newsletter:

<https://fda.fsu.edu/newsletter>